



WEST MAMPRUSI MUNICIPAL ASSEMBLY

NORTH EAST REGION-GHANA

2023 ANNUAL ACTION PLAN

OF THE MEDIUM TERM DEVELOPMENT PLAN

UNDER

AN AGENDA FOR JOBS:

CREATING PROSPERITY AND EQUAL OPPORTUNITY FOR ALL

PREPARED BY:
MUNICIPAL PLANNING CO-ORDINATING UNIT
WEST MAMPRUSI MUNICIPAL ASSEMBLY
P. O. BOX WL6
WALEWALE-N/R
E-mail: wmd.nr.gh@gmail.com

OCTOBER, 2022

Table of Content

Table of Content	2
Executive Summary	4
CHAPTER ONE	5
INTRODUCTION TO THE 2022 ANNUAL ACTION PLAN.....	5
5 1.2 <i>Profile of the West Mamprusi Municipal</i>	5
5.1.1 1.2.1 Introduction.....	5
5.1.2 1.2.2 Description of the Vision, Mission and Core Values of the Municipal.....	5
5.1.3 1.2.3 The establishment of the West Mamprusi Municipal	6
5.1.4 1.2.4 Location and size	6
5.1.5 1.2.5 Climate and Vegetation	10
5.1.6 1.2.5.1 Analysis of climate change and its effects.....	10
5.1.7 1.2.6 Natural and man-made disasters	11
5.1.8 1.2.7 Natural resource endowment and utilization.....	12
5.1.9 1.2.8 Settlement Systems.....	13
6 1.2.9 Demographic Characteristics.....	14
6.1.1 1.2.9.1 Population size, structure and composition	14
6.1.2 1.2.9.2 Migration	14
6.1.3 1.2.10 Social characteristics.....	15
6.1.4 1.2.10.1 Ethnicity, Religion and Culture.....	15
6.1.5 1.2.10.2 Poverty, Vulnerability, Inequality and Social Protection.....	16
1.2.11 Economic characteristics	18
6.1.6 1.2.11.1 The Local economy	18
6.1.7 1.11.2 Agriculture and food security.....	19
6.1.8 1.2.12 Governance	22
6.1.9 1.2.12.1 Security.....	27
6.1.10 1.2.13 Social Services:.....	27
6.1.11 1.2.13.1 Education.....	27
6.1.12 1.2.13.2 State of Economic and Social Infrastructure.....	29
6.1.13 1.2.13.3 Health and Nutrition.....	31
6.1.14 1.2.13.4 Nutrition	34
6.1.15 1.2.13.5 Information Communication Technology (ICT).....	35
6.1.16 1.2.13.6 Water and sanitation.....	36

6.1.17 1.2.13.7 Social and Economic Issues	38
2.2 2022 AAP.....	41

List of Figures

Figure 1: West Mamprusi Municipal in National Context.....	7
Figure 2: Physical Map of West Mamprusi Municipal	9
Figure 3: flood risk map of West Mamprusi Municipal	12
Figure 4: Population pyramid by age and sex	14
Figure 5: Religious composition in the West Mamprusi Municipal	16
Figure 6: Categories of LEAP beneficiaries in West Mamprusi.....	17
Figure 7: Agriculture production by commodity in West Mamprusi.....	20
Figure 8: The Administrative structure of the Assembly	23
Figure 9: Map of the Zonal Councils	24
Figure 10: Trend analysis of BECE performance from 2017-2020	29
Figure 11: Health facilities in the Municipality.....	32
Figure 12: Institutional Malaria Case Fatality	32
Figure 13: Skilled delivery coverage	33
Figure 14: Institutional Maternal mortality	34
Figure 15: ODF Coverage	38

List of Tables

Table 1: Current conditions (climate change stressors)	10
Table 2: Potential future conditions (climate change stressors).....	10
Table 3: Effects of climate change	11
Table 4: Categories/types of disabilities in West Mamprusi Municipal.....	17
Table 5: Decentralized Departments in West Mamprusi Municipal	25
Table 6: List of CSOS and Development Partners operating in West Mamprusi Municipal.....	26
Table 7: Basic Educational Institutions and enrolment in West Mamprusi Municipal	27
Table 8: Students performance at BECE	28
Table 9: Enrolment of SHS students under the Free SHS policy.....	29
Table 10: Open defecation free (ODF) Status.....	37
Table 11: Summary of key development issues	39

Executive Summary

This plan reflects the Development Issues identified during the performance review of the 2022 AAP and the earlier issues captured in the 2022-2025 MTDP with reference to the goals of the National Medium-Term Development Policy Framework (2022-2025), An Agenda for Jobs: Creating Prosperity and Equal Opportunities for all. This Annual Action Plan (AAP) for 2023 is the second Plan extracted from the Medium Term Development Plan prepared to address the development challenges of the West Mamprusi Municipal for the period (2022-2025). The document is presented in two chapters with Annexes. Chapter one focuses on the Profile in brief/Current situation of the Municipality. Chapter two of the plan provides detailed information on prioritised development issues linked to the relevant thematic areas of the NDPF (2022-2025). It is anticipated that Development Partners will find it useful to partner in the implementation of projects and activities identified therein.

CHAPTER ONE

INTRODUCTION TO THE 2023 ANNUAL ACTION PLAN

Section 8 of the National Development Planning (System) Regulations, 2016, state that “A district planning authority shall implement the approved district development plan through the preparation of an annual action plan”. It is the responsibility of the West Mamprusi Municipal Assembly, the Planning Authority, to implement and monitor the development plan. This 2023 Annual Action Plan (AAP) is the second Plan extracted from the Medium Term Development Plan prepared to address the development challenges of the Municipality for the period (2022-2025). It is anticipated that Development Partners will find it useful to partner in the implementation of projects and activities identified therein.

5 1.2 Profile of the West Mamprusi Municipal

5.1.1 1.2.1 Introduction

This profile is developed with data from communities, decentralized department/agencies and the performance review of the 2022-2025 MTDP. The profile presents an analysis of the current situation of the Municipality in terms of potentials, opportunities and key development issues, among others.

5.1.2 1.2.2 Description of the Vision, Mission and Core Values of the Municipal

1.2.2.1 Vision

‘A truly decentralized and client focused municipality providing quality socio-economic services to the citizenry in a participatory environment’.

1.2.2.2 Mission

The West Mamprusi Municipal Assembly exists primarily to improve and sustain the living standards of the people including the vulnerable and excluded through the effective and efficient mobilization and utilization of resources with the direct participation of the people (beneficiaries) and the private sector in a friendly environment.

1.2.2.3 Core values

In the discharge of her mandate, the West Mamprusi Municipal is mindful of the following core values:

- *Client focused*
- *Professionalism*
- *Transparency*
- *Accountability*
- *Public confidence/trust*

- *Innovation/creativity*
- *Efficiency,*
- *Effectiveness and*
- *Integrity.*

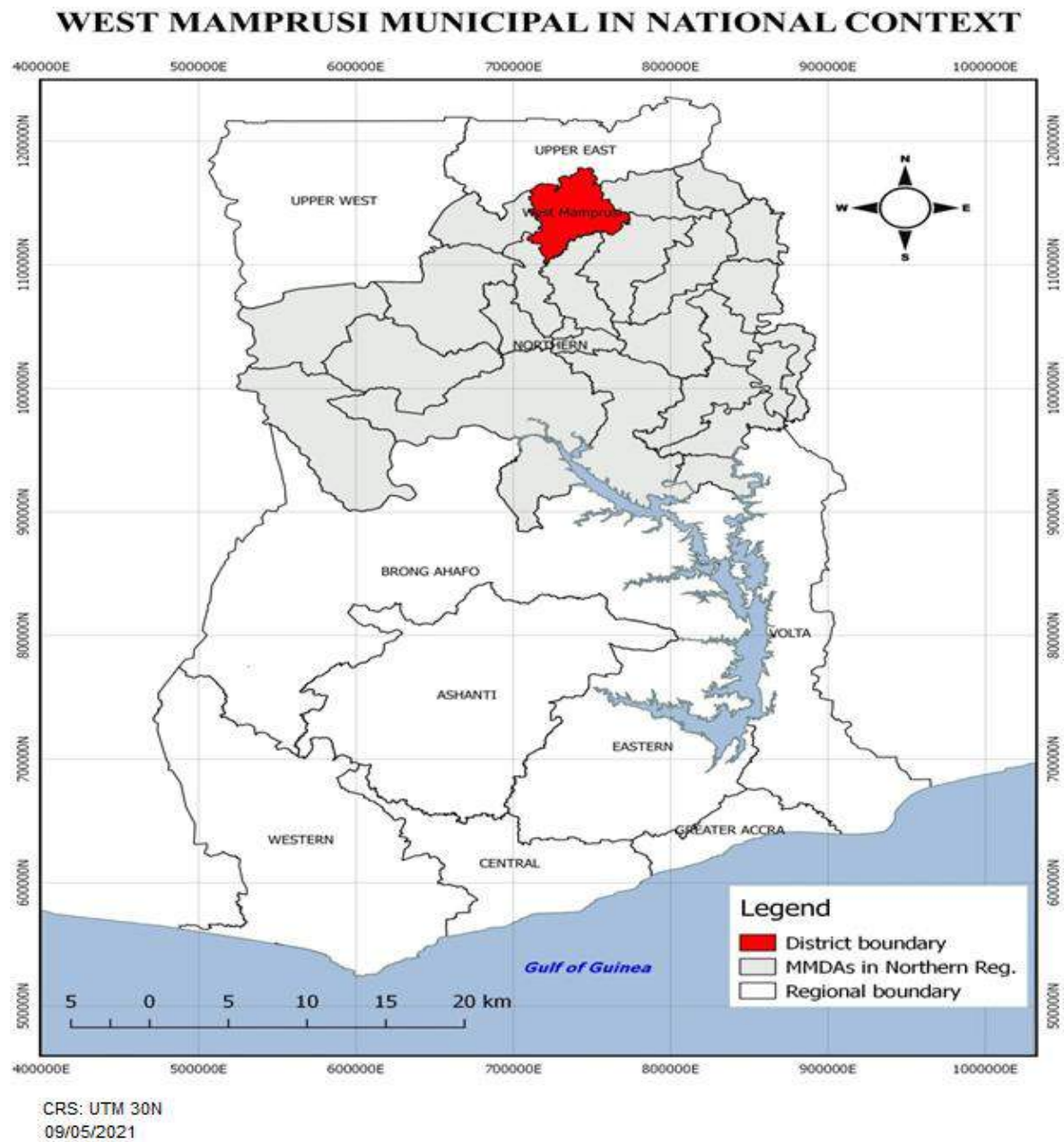
5.1.3 1.2.3 The establishment of the West Mamprusi Municipal

The West Mamprusi Municipal was created in 1988 under Legislative Instrument (LI) 1448 as a District Assembly. In 2012 it was replaced with LI 2061 following the creation of the Mamprugu Moagduri District. It was upgraded to West Mamprusi Municipal under Legislative Instrument (LI) 2276 in 2018. West Mamprusi Municipal is one of the six (6) administrative MMDAs in the newly created North East Region of Ghana with Walewale as its capital. Although it is in the North East Region, it has strong economic and functional linkages with some major settlements in the Upper East Region.

5.1.4 1.2.4 Location and size

West Mamprusi Municipal is located within longitudes 0°35'W and 1°45'W and Latitude 9°55'N and 10°35'N with a total land area of 2,596 km² and population density of 67.7. It shares boundaries with East Mamprusi Municipal to the East, Savelugu Municipal to the South, Talensi-Nabdam Municipal to the North and to the West, Mamprugu Moagduri Municipal. Other neighboring Municipals are Karaga to the South East-East (SEE), Kumbungu to the South West, Builsa South to the North West-West (NWW) and Kassena Nankana East to the North-North West (NNW). The Distance from the Municipal capital to the Regional Capital is 56 kilometers by road. Fig. 1 shows the map of the Municipality in the National Context.

Figure 1: West Mamprusi Municipal in National Context



5.1.5 1.2.5 Climate and Vegetation

The Municipality is situated in the Tropical Continental Climatic Zone with mean-annual temperature ranging between 28 and 31 degrees Celsius. It experiences a single maximum rainy season, which starts in late April with little rainfall characterized by severe winds and storms. The second and third quarters of the year generally record the heaviest rainfall rising to its peak in July-August and also the greatest number of rainy days declining sharply to a complete halt in October-November. Annual rainfall ranges between 950mm - 1,200mm. Maximum day temperatures are recorded between March-April, while minimum night temperatures are recorded in December-January. The humidity levels between April and October is generally high in the night and falls low during the day.

The Municipality lies within the Guinea Savannah woodland vegetation with light undergrowth and scattered trees. Trees such as shear, dawadawa and baobab are ubiquitous in the District. These trees are of economic importance as most people depend on them for their livelihood. However, notwithstanding the importance of these trees, indiscriminate felling of trees especially for firewood, charcoal and other related activities have put excessive pressure on the trees, making them stand the risk of extinction. This implies that, there should be a mass campaign to encourage the populace to embark on tree planting rather than indiscriminate felling of the tree species.

Over the past decade, there has been a dramatic change in the climatic conditions in terms of climate variability and change increase due to the general global warming as observed world over. The situation has resulted to some climate change stressors in the Municipality and if unchecked, will lead to more devastating stressors going into the future. Tables 1.4, 1.5 and 1.6 present analysis of the climate change and its effects in the Municipality.

5.1.6 1.2.5.1 Analysis of climate change and its effects

Table 1: Current conditions (climate change stressors)

Rainfall: Extreme rainfall events Drought Seasonal variability	Wind: Severe wind/tropical storms	Temperature: Prolonged heat waves Extreme hot days	Flooding: Flash/surface flooding River flooding
---	--------------------------------------	--	---

Table 2: Potential future conditions (climate change stressors)

Rainfall: Increased frequency and intensity of extreme rainfall events Increased frequency and intensity of drought Less annual rainfall Higher seasonal variability	Wind: More severe wind/storms	Temperature Increased number and intensity of heat waves	Flooding: Increased frequency and intensity of flash/ surface flooding Increased intensity, frequency, and extent of river flooding
--	----------------------------------	---	---

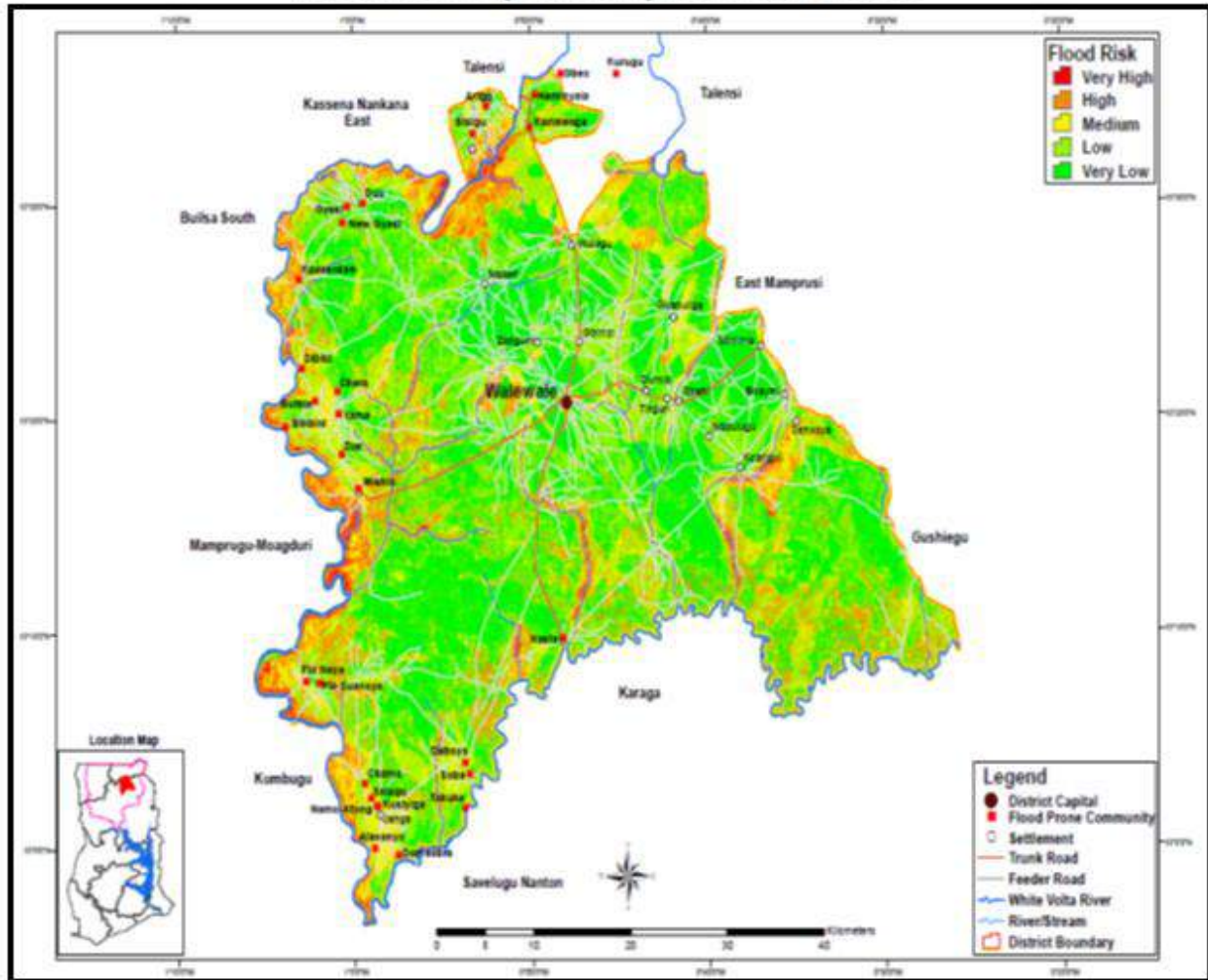
Table 3: Effects of climate change

Agriculture	Water and Sanitation	Natural Resources	Energy	Health	Infrastructure
Increases variability of rainfall increases the risk associated with farming	potential water availability from precipitation determines the availability of both surface and underground water	The increasing frequency of droughts reduces biodiversity	Falling total rainfall affects the generation capacity of the hydro-electric dams	Increased incidence of water, air and food borne diseases accompany flooding, drought, heat waves, and dry winds.	Climate change impacts on infrastructure such as roads, dams, power distribution lines, homes, drains and all structures that life revolves around
Uncertain Tropical weather and rainfall pattern impact crop production and the livelihoods of many rural folks.	Shortage of water result in outbreak of water borne and sanitation related diseases	Low levels of rainfall, high temperatures and winds exacerbate bush fires		E. g. cholera, incidence of guinea worm, and Cerebrum-spinal meningitis (CSM)	Impact negatively on Communication

5.1.7 1.2.6 Natural and man-made disasters

The Municipality is drained by the White Volta and its tributaries the Sissili and the Kulpawn rivers. Flooding by the White Volta is an annual problem caused mainly by the numerous small rivers, which flow into it especially below Pwalugu. Annual flash floods have also been caused by spilling of water from streams further upstream in Burkina Faso. About 49 communities are prone to flood risks. Figure 2 shows the flood risk map of the Area.

Figure 3: flood risk map of West Mamprusi Municipal
Flood Risk Map Of Mamprusi West District



CRS: UTM 30N
 09/05/21

5.1.8 1.2.7 Natural resource endowment and utilization

The West Mamprusi Municipality is blessed with a number of natural resources such as, rivers including the White Volta, arable land for agricultural activities, rocks for quarry activities, abundant shear and dawadawa trees as well as other forest products. Like many parts of Northern Ghana, the municipality is also blessed with sun light that could be tapped for solar energy. The rivers provide water for both domestic and agricultural purposes such as dry season gardening and fishing. There are large tracks of fertile valleys for commercial rice cultivation. The abundant shear and dawadawa trees wildly grown in the Municipality provide livelihood opportunities for women who are into shear nut picking, shear butter extraction and dawadawa processing. The shea tree, edible shea fruits and butter can be nurtured for both local and foreign uses. Nutritious Dawadawa with lipid, protein, carbohydrate and a good source of fat and calcium, an alternative to the different forms of Maggie can be derived from the Dawadawa trees.

Unfortunately however, human activities such as charcoal burning, and the recent mass destruction of the vegetation by commercial farmers destroy these economic trees in the Municipality. The vegetation along the river banks have also been depleted leading to the drying up of these river bodies immediately after the rains. An immediate ban on the large scale lumbering activities in the forest reserves is required while regulations in a form of bye laws are put in place to check destruction of the shear trees and the utilization of the natural resources.

The White Volta and its tributaries the Sissili and the Kulpawu rivers which flow into it at Pwalugu and the occasional flash floods caused by spilling of waters from further upstream in Burkina Faso can be harnessed by the construction of irrigation dams to support dry season farming. Thankfully, the Government of Ghana in collaboration with its development partners has initiated a project entitled the construction of Kpalugu Multipurpose Dam. This project when completed, would not only provide job opportunities for the teeming youth through agriculture and its related value chain activities, but would address the problem of perennial flooding in the Municipality and generate additional power to support the existing power source in the county.

5.1.9 1.2.8 Settlement Systems

Spatial Planning is an important component in the development planning and programming. It guides development in space, helps in development control and are also very important in street naming and property addressing. The Municipality has five (5) existing local schemes in use since the year 1997. These schemes include Moshie Fongu Residential Area, Moshie Fong Residential Area Extension, Kukua-Zugu Residential Area, Fogni-Kukoazugu and Nayirifong Planning Schemes. All the schemes fall within the Walewale Zonal Council while the remaining six (6) has no planning schemes.

Over the years, the area has seen rapid physical development which has exceeded the boundaries of the planned areas. There has also been some major physical developments that are not consistent with the local plans. Unfortunately, the five (5) existing planning schemes in the Municipality have not seen any revision since their preparation in 1997. The Assembly is therefore taking steps to update the schemes to reflect the ground situation with regard to rapid developments. The Assembly has realized that the existing schemes in the Municipality are woefully inadequate to ensuring development control. Therefore, new planning schemes are scheduled to be prepared for the Municipal capital and its adjoining communities such as Kukua, Logari, Banawa, Sandanfongu, Sayoo, Gbimsi, Wulugu etc other equally fast growing communities such as Janga, Kpasenkpe, Wungu, Tinguri, Guabuliga and Kparegu would also be planned within the next four years.

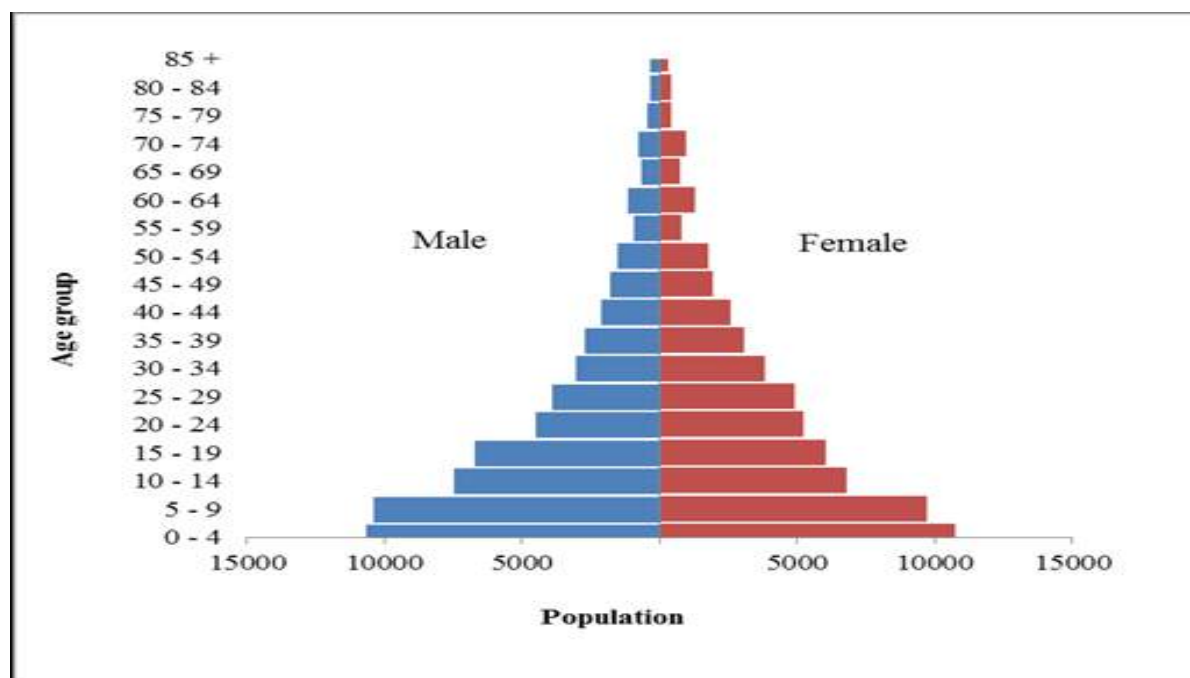
The West Mamprusi Municipal Assembly has a total 96 communities and a number of fishing and farm camps. Urbanization in the area is centered in Walewale, which is the dominant urban center with many social amenities. The Municipality is predominantly a rural one, with majority of the population living in rural areas with weak socio-economic infrastructure. In the area of housing, about 80 percent of single persons households use one room while 14.2 percent of same single households use two rooms. For the households of size four, 45.6 percent occupy two rooms. Household of size 5-8 use three rooms whereas household of sizes 9-10 occupy an average of 4 rooms.

6 1.2.9 Demographic Characteristics

6.1.1 1.2.9.1 Population size, structure and composition

The population of West Mamprusi Municipal, according to the 2021 Population and Housing Census is 175,755 with 51.2 percent females and 48.8 percent males. More than five in every ten (52.2%) of the population lives in rural areas, while the remaining 47.8 percent lives in urban areas. With a land size of 2,596km², the Municipality has a population density of 67.7. The population of the Municipality is youthful with about 46.2 percent below 15 years depicting a broad based population pyramid with only 6.5 percent elderly persons of at least 60 years. The total age dependency ratio for the Municipality is 102.6. The current household population of the Municipality is 173, 515 with a total of 30,450 households while average household size is 5.7.

Figure 4: Population pyramid by age and sex



Source: Ghana Statistical Service, 2010 PHS

6.1.2 1.2.9.2 Migration

Migration is the physical movement of people from one place to another. People migrate either within or from one Municipal or region to another for variety of reasons such as economic and educational opportunities.

Migration is a prevalent phenomenon in the West Mamprusi Municipality. Out-migration is common among the economically active age group. Many of the youth migrate to the southern part of the country and the Northern Regional Capital (Tamale) in search of greener pastures. A considerable number of people also migrate to neighboring districts and beyond for higher education. This development is largely due to the limited economic opportunities in the Municipality manifesting in the high levels of poverty among the people. The out-migration among the economically active age group has the tendency of depriving the Municipality of the required

manpower for a vigorous economic development. The out-migrants may also return with diseases including STDs acquired from other places to the Municipality. There is therefore the need to take advantage of the government flagship programmes such as the ‘One District One factory’, ‘Planting for Food and Jobs’, Rearing for Food and Jobs’ etc to accelerate economic development in the Municipality to engage some of the youth in income generating activities within the Municipality.

6.1.3 1.2.10 Social characteristics

Social services are those provided to the citizenry to enhance their general well-being and social welfare. These include education, health delivery, social protection as well as water and sanitation provision. The provision of all these services is vigorously pursued by the West Mamprusi Municipal Assembly. Details of the types, location, quantities, and qualities of social services available in the Municipal are presented in the ensuing sub-sections.

6.1.4 1.2.10.1 Ethnicity, Religion and Culture

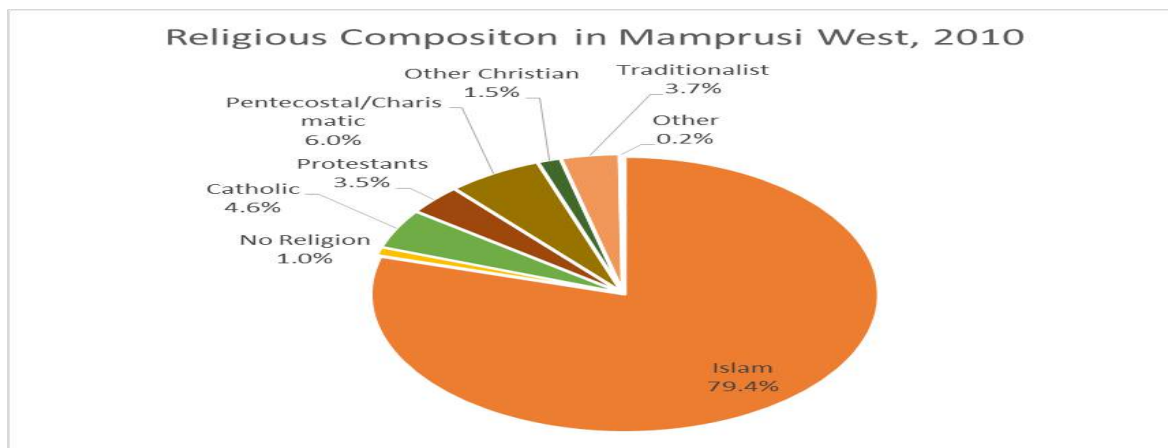
The predominant ethnic group in the Municipality is the Mole Dagbani (Mamprusis and Dagombas). The Municipal is largely inhabited by the Mamprusi (75%) who coexist harmoniously with other minor groups, such as the Builsa (4.7%), Frafra (2.7%), Kasena (2.2%), Dagomba (1.8%), and some other ethnic groups, (2010 PHC, GSS). The main traditional festivals celebrated in the area are the Bugun (fire festival) and Damba festivals. However, being a predominant Moslem area, the people also celebrate the two Islamic festivals known as Eid-ul Fitir and Eid-ul Adha. The dominant religious groups are Islam (79.4%), Christianity (15.6%) and the Traditionalists (3.7%), (GSS, 2010 PHC). Fig 1.4 illustrates the religious composition in the West Mamprusi Municipal.

A typical social hierarchy in a Mamprusi Community consists of the Chief, the Wudana who is the linguist in the village and leader of the elders; the Maasu/ Kpanadana (the elders of the Community and advisors to the chief), the Tindana (in charge of the Gods in the Community/ Fetish priest), the Kanbonnaba (the Chief Warrior), the Nachinaa (the Youth Leader), the Mangazia (the Women’s Leader), the Fongu Kpamma (the Sectional Heads).

There are four main paramountcies in the Municipality all answerable to the King of Mamprugu – the Nayiri. These include the Wulugu Traditional Area (headquarters at Kpasenkpe), Soo Traditional Area (headquarters at Janga), Wungu Traditional Area (headquarters at Wungu) and Kurugu Traditional Area (headquarters at Kurugu). There are also a number of divisional chiefs under these major chiefs.

The people have a high spirit of local participation especially on issues of development. They are also naturally friendly to anybody either a citizen or a foreigner. This accounts for the relatively peaceful coexistence of the people.

Figure 5: Religious composition in the West Mamprusi Municipal



Source: GSS, 2010 PHC

6.1.5 1.2.10.2 Poverty, Vulnerability, Inequality and Social Protection

Poverty remains pervasive in the Municipal and one of the indicators that exacerbate vulnerability as it exposes people to the shocks of any disastrous condition. According to the recent survey by the Ghana Household Registry, 6,414 households in the municipality are leaving with extreme poverty. These households have the higher probability of livelihood stress occurring among them in the Municipal. Vulnerable people in the Municipality include people living with AIDS, Persons with disabilities, women, the aged, and children. Cultural beliefs, perceptions, practices and disasters are the major causes of vulnerability concerns in the Municipality and the major victims are mainly people with disabilities, women and children. Cultural practices such as early marriage has rendered some children very vulnerable, uneducated and economically hopeless. The changing climate in the Municipality has also exacerbated the situation of the poor peasant and small holder farmers with limited alternative livelihood options. Dealing with vulnerability issues therefore requires a multi-faceted approach that will address the varying needs of the potential victims of the circumstance.

Persons with disability as defined in the 2010 Population and Housing Census are those who are unable to perform specific tasks/activities or are restricted in their performance due to loss of function of some part of the body as a result of impairment or malformation. The development of a nation depends on the important contributions of not only a segment of the population but on the collective contribution of every individual, including Persons with Disabilities (PWDs). To this extent, government and other development partners in recent years have made progress in addressing disability issues, resulting in some positive gains in improving the lives of PWDs in the country. For instance the government has enacted the Disability Act, 2006 , Act 715 to address issues of high poverty among PWDs due to low levels of education and lack of employable skills; inaccessibility to public transport; and unfriendly environmental facilities such as the widespread absence of ramps for PWDs and uncovered drains and gutters.

According to the 2010 PHC, a total of 2,068 (1.7%) persons had one form of disability or the other. Both males and females have equal proportion of disability in the Municipality. The commonest form of disability includes, sight, hearing, physical, speech, intellectual and emotional disabilities.

The West Mamprusi Municipal Assembly through its Department of Social Welfare and Community Development identified some of the people living with these categories of disabilities. Table 1.8 presents the categories and persons living with the disability.

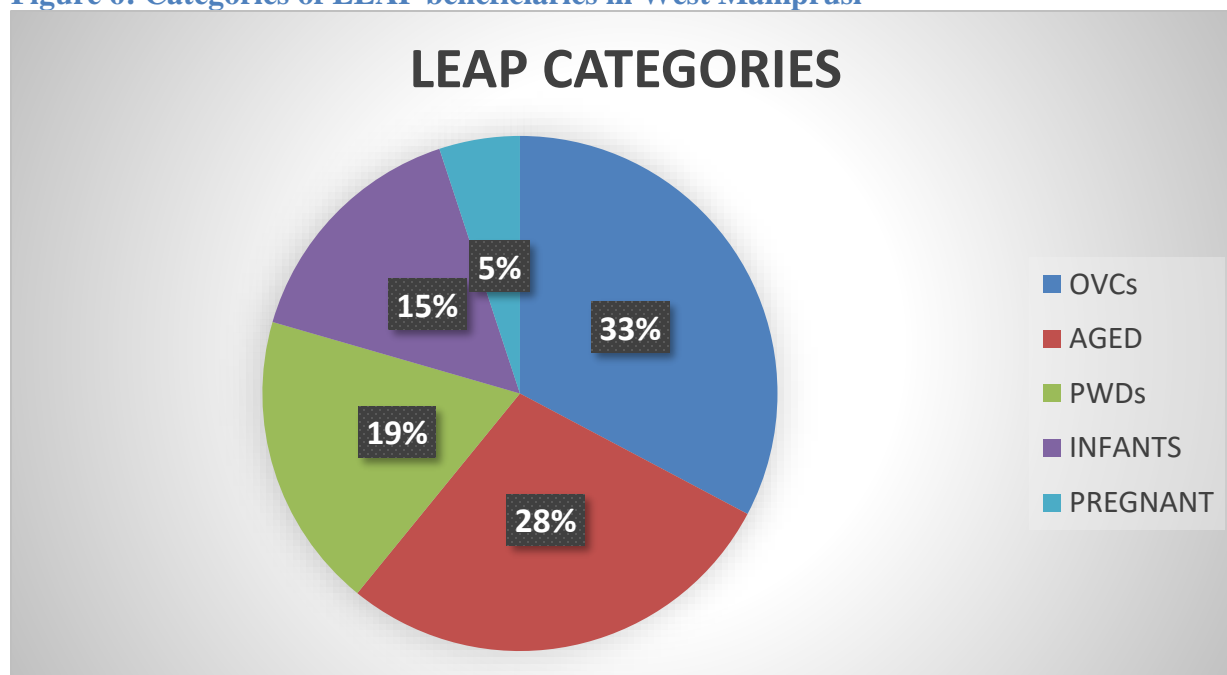
Table 4: Categories/types of disabilities in West Mamprusi Municipal

S/No.	CATEGORY	MALE	FEMALE
1.	Difficulty moving	216	281
2.	Difficulty seeing	137	191
3.	Difficulty speaking & hearing	39	41
4.	Fits	116	141
5.	Strange behaviour	13	10
6.	Lost of sensation & feeling	2	3
7.	Albino	18	10
8.	Multiple disability	34	40
	Total	611	717
	Grand total	1,328	

Source: Department of Social Welfare and Community Development

Over the years, the government of Ghana in collaboration with its development partners has rolled out a number of social interventions across the country aimed at providing social safety-net to empower PWDs, children and other vulnerable groups to ensure that they contribute to national development. The interventions rolled out in the West Mamprusi Municipality include; Livelihood Empowerment Against Poverty (LEAP) programme with total number of 6,416 beneficiary households, Disability fund, Child Rights Promotion and Protection programmes, the Ghana Productive Safety Net Project (LIPW) with over 1,000 beneficiaries.

Figure 6: Categories of LEAP beneficiaries in West Mamprusi



1.2.10.3 Gender Analyses

The sustainable development goal (SDG5) seeks to achieve gender equality and empower all women and girls. The 2021 population and housing census report indicates that females constitute about 51.2% of the total population in the Municipality. This means that to achieve the development goal of the municipality, equal opportunities should be given to all segments of the population. However, there are serious imbalances in the system to the disadvantage of women. Equal opportunities are limited to both men and women due to some socio-cultural beliefs. For instance, women only have access to land but do not control land. This renders them economically insolvent since the local economy of the Municipality is basically agrarian. There is therefore the need to introduce gender specific programs that will empower women economically. To do this, women groups will be identified and assisted through capacity building and provision of credit facilities to enable them set-up small and medium scale businesses to boost their economic status in the society and also take care of their children and various household needs.

The educational system in the Municipality presents equal opportunities for both girls and boys as they both have access to teaching and learning in the various schools. However the physiological make up of girls coupled with the numerous unpaid care works at household levels put them at a disadvantage position to compute favorably with their male counterparts if not assisted. There is therefore the need to recognize and value the unpaid care and domestic work through the provision of public services, social protection policies and the promotion of shared responsibility within the household and family levels.

On the aspect of decision making, major household decisions are taken by household heads who are predominantly men with little or no involvement of women. Again in the local governance, women participation has been very low. This situation is clearly demonstrated in the current composition of the General Assembly which has a total membership of 42 with only 5 female appointees. There is therefore the need to consciously put together strategies to increase women representation in the local governance system while continuous sensitization is carried out to improve women participation in household decision making.

1.2.11 Economic characteristics

6.1.6 1.2.11.1 The Local economy

The major economic activities in the area are basically primary activities and these include; Agriculture, trading in foodstuff such as maize, beans, rice and other grains, sand winning mostly for construction work, quarrying, fishing along the White Volta, Shea processing and petty trading such as provision stores. Small and Medium Enterprises operating in the Municipal to boost the local economy include hairdressing, canteen and restaurant services, tailoring and dressmaking, metal-based-blacksmithing, welding, Art-based such as pottery, basketry, weaving, painting & sign writing, Drawing etc. these enterprises lack managerial skills to enable them improve upon their businesses. They require capacity building and financial facilities at moderate conditions to enable them exert the desired impact on the local economy.

The Municipality has also benefited from the government ‘one district one factory’ policy with the construction of watermelon processing factory at Logari which is about 95% complete. Here Excellency the Second Lady has also facilitated the construction of a shear butter processing

factory at Gbimsi. Meanwhile, construction is also ongoing on a second rice processing factory by a private company known as Tamanaa Rice Foundation in collaboration with the Municipal Assembly. These factories when completed and operational would provide job opportunities for the people throughout the production value chain to boost the local economy.

6.1.7 1.11.2 Agriculture and food security

The Municipality has an agrarian economy with about 85.5 percent of its household population involving in one form of agriculture or the other. Crop production is on a subsistence basis where small holder farmers produce for family upkeep and occasional sale. However, over the past few years, commercial farming has been intensified in the Municipality with large parcels of land being cleared for rice, maize and soya bean cultivation. The danger however is the destruction of the vegetative cover by these commercial farmers. Huge numbers of trees including the economic trees like shea have been felled to this effect. The major crops grown in the Municipality are maize, millet, rice, groundnuts, cowpea and sorghum. These crops are grown during the rainy season. Minor crops grown include; sweet potato, bambara beans, cajanus cajan and water melon been an emerging cash crop. Dry season farming (mainly vegetable production) is done along the banks of the White Volta and its tributaries. Vegetables cultivated include; tomatoes, onions, pepper and cabbage are cultivated. Cowpea is also planted along the banks after flood waters have receded serving as a coping strategy against farm losses by floods. Livestock such as cattle, goats, sheep, pigs and poultry are the most reared. The most prevalent livestock diseases are; CBPP in cattle, PPR in sheep and goats, New Castle in poultry.

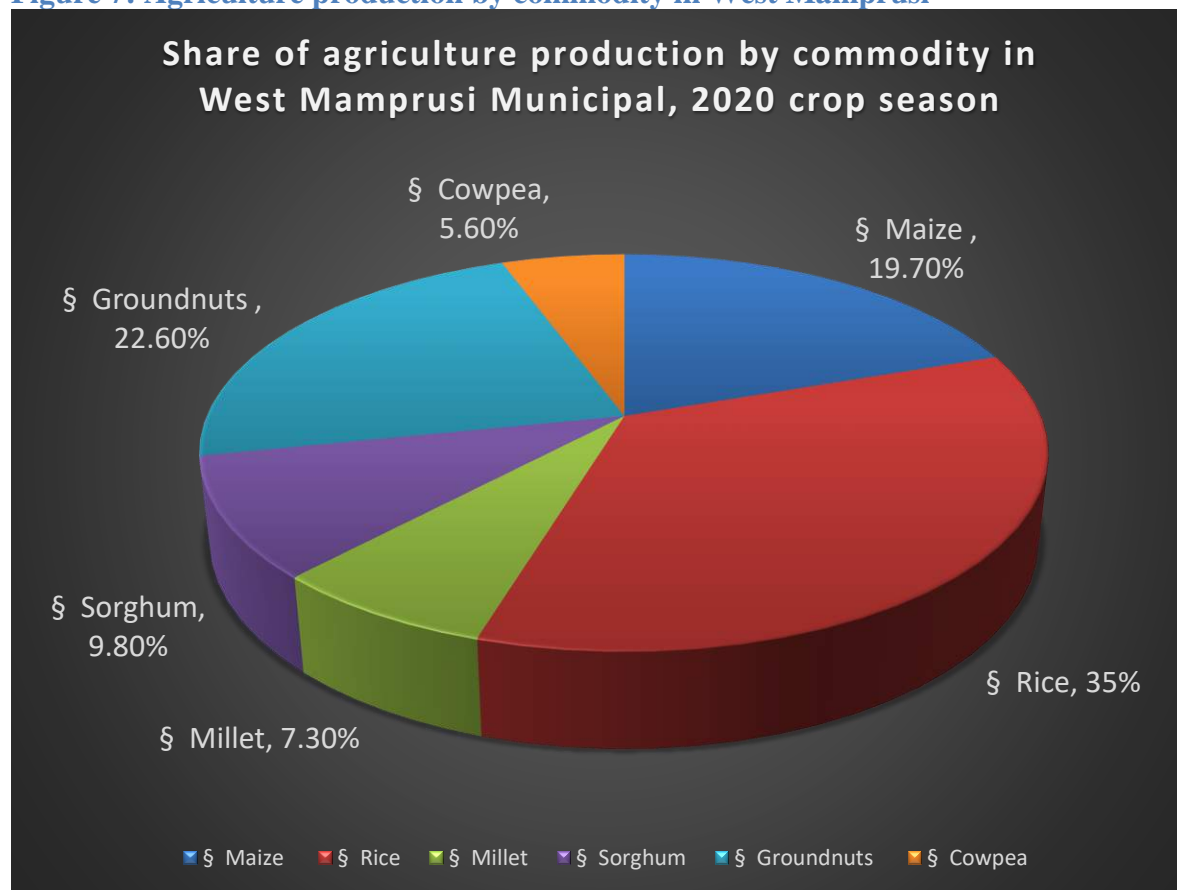
Estimated arable land size in the municipality is 125,456 ha with average area cropped per annum of 40,986ha. About 60% of arable land is suitable for rice production. Meanwhile, the estimated farmer population is only 40,800 (26,520M, 14,280F). This means that there is still vast land available for potential farmers in the Municipality. Investment in this sector therefore has good returns and potentials of transforming the local economy.

Post-harvest losses have been one of the major problems of the agricultural sector in the Municipality. This situation is partly due to absence of storage facilities. To address this challenge, a number of warehouses have been constructed in the Municipality. Under the government policy of 'One District One Warehouse' initiative, a warehouse has been constructed at Walewale. MiDA has also constructed a 10,000mt capacity warehouse at Walewale. Other warehouses in the Municipality include the 100mt capacity warehouses constructed by SADA-MVP at Nabari, Duu, Kpasenkpe and Kinkandina respectively. With the ever increasing commercialization of agriculture especially in rice and maize production, more of such facilities are required in the Municipal to boost agriculture production.

Food security

Agricultural production is more evenly distributed among several commodities in the Municipal. Rice account for about 35. % of the total agricultural output in the Municipal. Fig 1.5 shows the agricultural production by commodities in the area.

Figure 7: Agriculture production by commodity in West Mamprusi



Source: Department of Agriculture, West Mamprusi Municipal, 2020

Women play a prominent role in agriculture in the Municipal yet they face persistent economic and social constraints. Majority of women in the Municipal are comfortable with providing input related to production decisions. They however have less control over the use of household income.

Agribusiness activities in the municipality

Agribusiness is a term used to describe the sector that encompasses all economic activities that are related to farming, i.e., chemicals, breeding, crop production/farming, farm machinery, distribution, marketing, and sales. The Agribusiness system comprises of three sectors:

- The agricultural input sector
- The production sector
- The processing manufacturing sector.

The agricultural input sector

This sector of the agribusiness deals with the production, supply and distribution of agricultural inputs along the value chain. The common agribusiness activities in this value chain include supply and sale of chemical fertilizer, agrochemicals, seed, farm equipment/implements, among others. There are about 116 registered sales agents within the municipality for the distribution of the government subsidized realizer across the municipality. These agents are however concentrated in

the major towns making it difficult for some rural communities to access the commodity. However, the sale of other inputs such as agrochemicals are found in nearly every community.

The production sector

In this sector, various commodities such as maize, millet, rice, soya beans, groundnuts, sorghum, watermelon, among other crops are cultivated in the municipality. Under this value chain, Crop production is on a subsistence basis where small holders farmers produce for family upkeep and occasional sale. However, in the past few years, there has been a growing commercialization in the production of some selected crops such as rice, soya beans, maize and watermelon. Large tracts of lands are being cleared for the cultivation of rice, maize, and soya beans. One of the major cash crops which has huge potential in the Municipality is watermelon production. Most communities in the municipality are now shifting away from groundnut production to this crop. Unlike many crops, the production of watermelon can be done twice within a year. These crops are all grown during the rainy season. Dry season farming is done along the banks of the White Volta during which crops such as tomatoes, onions, and beans are cultivated for sale and domestic use.

The Municipality is also noted for the rearing of various kinds of livestock including cattle, goats' sheep and poultry. These animals are sold in both local markets and outside the municipality. Sheep, goats and cattle for example are transported to southern Ghana for sales. There are a number of people along this value chain who facilitate this process.

Agro-processing/manufacturing.

This activity under the chain is the processing of agricultural produces in to finished and semi-finished products. This ranges from maize processing, groundnut processing (eg groundnut paste, cake and oil), soya processing (e.g baby foods, Kabab, oil and tom brown) and rice parboiling and packaging, of which there is a private company known as Tamanaa Rice foundation at Nasia in the municipality that is processing and bagging of processed rice for both domestic and foreign market. There is also a second rice processing factory being constructed by same company at Loagri in the Municipality to further boost the production of rice in the area.

Also the municipality has a great potential for the production of water melon, the challenge was the marketing and processing of the melon into juice and other soft drinks. However, KINAPHARMER in collaboration with government is constructing a watermelon processing factory at Loagri under the One District one Factory initiative. Some out growers are targeted for this project. There are also a number of Aggregators who act as off Takers within the value chain in the municipality.

Tourism

West Mamprusi Municipal is endowed with unique tourist sites like the traditional mosque at Wulugu, and the mysterious light on Wungu road. The traditional mosque was built by an Islamic scholar in Wulugu during the 1980s. Although a mud wall built with simple local materials such as gravel and stone without cement, the mosque has withstood natural disasters such floods and storms and remain very strong as though it was built with modern materials such as concrete. The mysterious light on the Wungu road also dates back into history. From a distance, the light appears bright and broad but gets narrow and narrow as you move near it. Although inhabitants speculate how the light comes to be, no one seems to know as a matter of fact when and how the light came there.

There are other sites like the Kpabgu cave which is believed to be housing a lion and python. Moachira at Bimbinni where the White and Black Volta meet but run parallel no matter the disturbances for it to mix, The White Volta can serve as a good source for fishing and water transport. Hydro- electric Dam can be constructed at Nasia and Karimenga. The Mysterious Golinga (Soglinga) springs at Duu that runs in the dry season. Kugyinni (a big stone sitting on a very small stone where a lion periodically rest under) about 2km off Walewale-Wungu Road. The Hills in the Municipality can be used for sites of communication towers. All these are potential tourist sites which when explored and developed could bring economic gain to the West Mamprusi Municipal.

The Municipal has important tourism related socio-cultural resources. These include:

- Traditional Bone Specialist at Loagri on the Tamale - Walewale High Way
- Annual cultural festivals, Damba (celebrated on the 11th – 17th of Damba of the Luner calendar)
- Annual bugum festivals (celebrated on the 9th Day of Bugum. of the Luner calendar)
- Largely unadulterated cultural heritage, particularly in the rural areas.

6.1.8 1.2.12 Governance

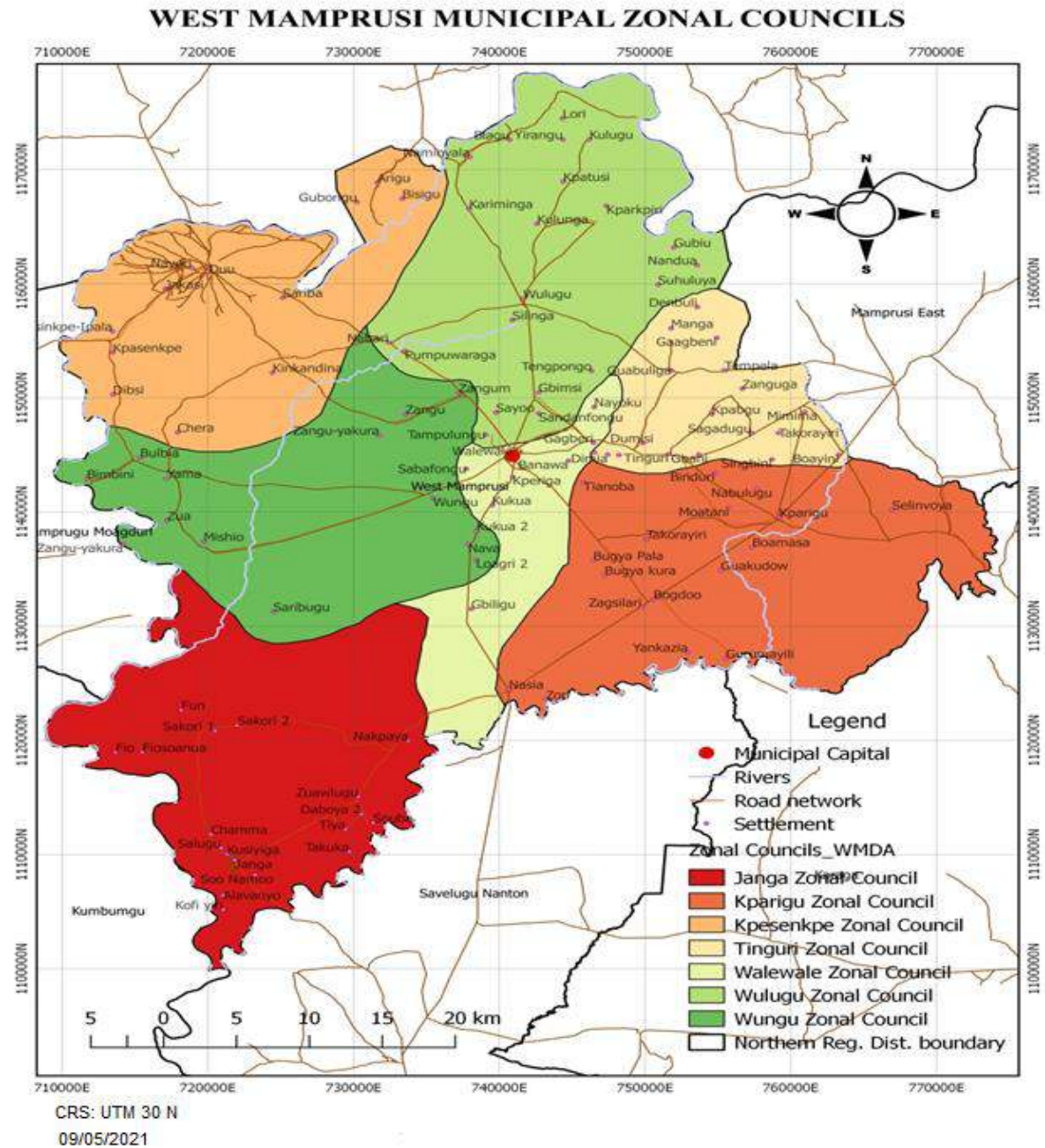
Political and administrative structure

The Municipal is headed by the Honorable Municipal Chief Executive who serves as a representative of the President, through appointment. As a head, the Municipal Chief Executive takes executive decisions and approvals to guide the daily administration of the Municipal Assembly. In all the legislative arm of the Assembly has a membership of forty-six (46) members made up of thirty-one (31) elected members, thirteen (13) government appointees, the Municipal Chief executive, the Member of Parliament, and the Municipal Coordinating Director who serve as a Secretary to the Assembly.

The Executive Committee of the Municipal Assembly has in place five (5) mandatory committees. These are Development Planning; Social Services; Works; Justice and Security; and Finance and Administration. The Municipal Assembly also have in place the Public Relations and Complain Committee which considers any complains and grievances brought to the Assembly.

Administratively, the day-to-day administration, management and co-ordination of activities, projects and programmes lies within the responsibilities of the Municipal Co-ordinating Director. The co-ordination is done with interplay of various technocrats representing different fields of work including the Gender Desk Officer and require to achieve overall development of the Municipal. The Assembly has an established Client Service Unit at the Municipal Administration block which serves as a first point of call for enquiries, searching for information, directions, lodging of complaints, among others.

Figure 9: Map of the Zonal Councils



As indicated earlier, the Municipality has thirty-one (31) electoral areas and unit committees (each electoral area has a five member unit committee). The Unit Committees are the basic unit in the local governance system working closely with the people to facilitate community mobilization, public education, local revenue mobilization, environmental cleanliness, registration of births and deaths, implementation and monitoring of self-help projects among others. However, some Unit Committees are nonfunctional as a result of several factors, some of which are poor caliber of personnel serving on the committee, inadequate resources for operations and poor definition of roles. The poor performance of the sub-structures reduces their effective communication and

collaboration with their communities and the Municipal Administration as well as participation. Other structures that assist in governance are the Traditional Authorities, Youth Associations and Civil Society Organizations. These other structures exercise much influence on their respective communities/associations and are very helpful in ensuring people participation for good governance. The Assembly has also established a Client Service Unit at the Administration which serves as a first point of call for enquiries, searching for information, directions, lodging of complaints, among others.

The administrative functions of the Municipal Assembly is headed by the Municipal Coordinating Director with support from various departments and units made up of various technocrats representing different fields of work to achieve overall development of the Municipality. The Assembly operates under the provisions of L.I. 1961 which brings together thirteen (13) decentralized departments under the umbrella of the Assembly. Table 1.9 contains decentralized departments in the Municipal.

Table 5: Decentralized Departments in West Mamprusi Municipal

N	Department	Constituent	Available/Not available
1	Central Administration	General Administration	Available
		Municipal Planning Coordinating Unit	Available
		Births and Deaths Registry	Available
		Information Service Dept.	Available
		Environmental Division of MLG	Available
		Statistical Service	Available
		Records unit	Available
2	Education, Youth and Sports	Education, Youth, Sports and	Available
		Ghana Library Board.	Not available
3	Social Welfare and Community Development	Social Welfare	Available
		Community Development	Available
4	Finance	Controller and Accountant General	Available
5	Physical Planning	Town Planning	Available
		Parks and Garden	Available
6	Works	Public Works Department	Available
		Water and Sanitation	Available
		Rural Housing	Not available
7	Trade and industry	Trade/BAC	Available
		Cottage Industry	Not available
		Co-operatives	Available
8	Natural resource conservation	Forestry	Available
		Games and Wildlife	Not available
9	Health	Municipal Health Management Team	Available
10	Agriculture	Animal Health & Production	Available
		Fisheries	Not available
		Agricultural Extension Services	Available
		Crop services	Available
		Agricultural Engineering	Available
11		Disaster Prevention and Management	Available

	Disaster Prevention and Management	Ghana Fire Service	Available
12	Transport		Not Available
13	Urban Roads		Not Available

Source: West Mamprusi Municipal Assembly, 2021

Table 6: List of CSOS and Development Partners operating in West Mamprusi Municipal

NO	NAME OF ORGANISATION	INTERVENTION AREA	OPERATIONAL AREA	CONTACT/ ADDRESS
1	Catholic Relief Service (CRS)	WASH	Selected communities in the Municipality	0243739823
2	UNICEF	Girls Education challenge, WAHS, and Child protection	Selected communities in the municipality	
3	GLOBAL Communities	WASH		
4	CAMFED	Girls Education	Selected Schools in the municipality	0245344126
5	Impact (ED) International	Provision of TLMs (media) and building of teacher's capacity.	Selected circuits in the municipality	0504881892
6	NABOCADO	Health, Education, Livelihoods and Advocacy	Selected communities in the municipality	
7	Brave Aurora	WASH, child and protection provision of TLMs and furniture/capacity building of teachers	Guabuliga circuit	0208976763
8	SEND GHANA	Advocacy, Health, Education and Agriculture	Entire Municipality	0207422102
9	ASIRIBISI (CBO)	Agriculture Water and Sanitation, Advocacy	Entire Municipality.	0243802011
10	ECO PROJECT	Organic farming (Agriculture)	Entire Municipality.	Walewale Mr. Yussif 0549132599 0504395442
11	CHERA BIISI FARI	Sesame projection (Agriculture)	Entire Municipality.	Mr. Joe 0247414448
12	ADDRO	Health	Entire Municipality.	
13	SYSTEM FOR HEALTH	Health	Entire Municipality.	
14	Plan International Ghana	Education- Child sponsorship	Entire Municipality.	0263009523
15	GIZ	Governance, Accountability, IGF, and Planning	Entire Municipality.	0596914660

6.1.9 1.2.12.1 Security

There have been reported cases of armed robbery attacks in the Municipality especially at Wulugu after Walewale, the Municipal capital along the Walewale-Bolgatanga highway. The Municipal security professional intervention always rescues the high impact of robbery in the reported area. The occurrence of crime and attacks in the Municipal call for effective security management measures with adequate logistics in terms of police posts, patrol vehicle and personnel.

Limited compliance to spatial land use guidelines causes land disputes especially in the Municipal capital, Walewale. A private unqualified land agent facilitates land allocation encroaching public spaces including school lands. Lack of spatial plan for the Municipal retards development as unplanned development continues in the Municipality.

6.1.10 1.2.13 Social Services:

6.1.11 1.2.13.1 Education

The Municipal is endowed with a number of educational facilities especially from Pre School to Junior High School levels. It has a total of 140 pre-schools and 142 Primary Schools, 55 Junior High Schools, 3 Senior High Schools and 1 Vocational/Technical school. Table 1.8 shows educational institutions and enrolment in the municipality.

Table 7: Basic Educational Institutions and enrolment in West Mamprusi Municipal

S/No.	SCHOOL	No. OF SCHOOLS	ENROLLMENT FOR BOYS	ENROLLMENT FOR GIRLS	TOTAL ENROLLMENT
1	KG, Creche/Nursery	140	4,331	4,443	8,774
2	Primary	142	10,563	10,343	20,906
3	JHS	55	4,164	3,970	8,134
4	SHS	3	2,570	1,705	4,275
5	TVET	1	698	849	1,547
GRAND TOTAL		342	22,326	21,310	43,636

Source: Municipal Directorate of GES, 2021

Administratively, the Municipality is zoned into ten (10) educational circuits to facilitate effective supervision. They include; Walewale East, Walewale West, Walewale central, Wungu, Kpasenkpe East, Kpasenkpe West, Janga, Tinguri, Kparigu and Guabulga circuit.

Key Education Development Issues

The Pupil Teacher Ratio (PTR) in 2017 for kindergarten was 1 teacher to 102 pupils; primary was 1 teacher to 102 and JHS was 1 teacher to 27. This clearly shows that the teacher requirement at the kindergarten and primary levels was very high in 2017. The Municipality observed marginal improvement in the PTRs in 2020 as PTR of kindergarten reduced to 1 Teacher to 73 pupils, primary reduced to 1 Teacher to 48 pupils, with JHS remaining constant. Notwithstanding, these reduction at the Kindergarten and Primary levels still require urgent intervention to further improve the PTRs.

Over the years, investment in basic education does not reflect in the performance of students in the BECE in the Municipality. The performance has not been satisfactory over the last five years. This situation requires key stakeholder dialogue to identify the causes of the poor performance and how the situation could be reversed. Table 1.8 presents trend analysis of BECE performance since 2017.

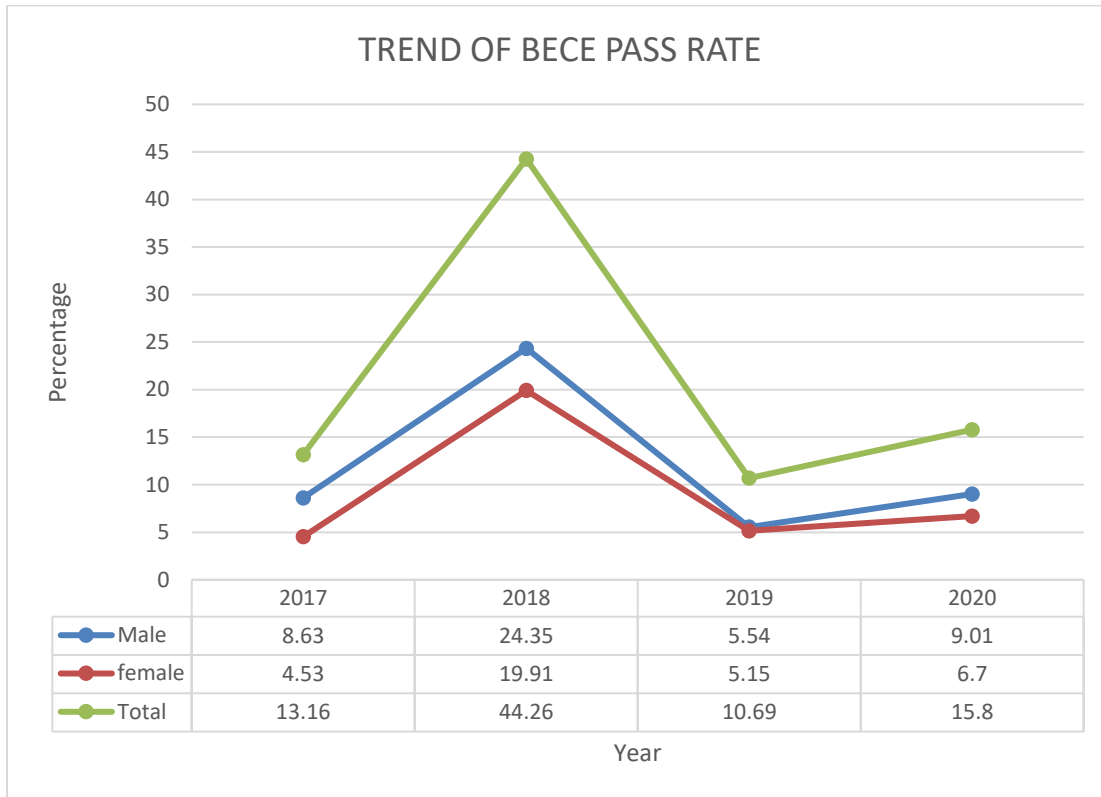
Table 8: Students performance at BECE

Year	Number of Candidates Presented			Number of candidates Who scored aggregate 30 and better			% of Candidates who obtained aggregate 30 and better		
	Male	Female	Total	Male	Female	Total	Male	female	Total
2017	1112	1016	2128	96	46	142	8.63	4.53	13.16
2018	772	678	1450	188	135	323	24.35	19.91	44.26
2019	1336	1224	2560	74	63	137	5.54	5.15	10.69
2020	1333	1263	2596	234	176	410	9.01	6.7	15.80

Source: Municipal Directorate, GES, 2021.

Figure 6 shows the trend of student performance in BECE from 2017 to 2020. Specifically, the Figure examines the percentage of students who passed BECE with aggregate 30 or batter. The trend over the period under review has been erratic with the best performance occurring in 2018 and the worse performance occurring in 2019. Student performance improved in 2018 and worsened in 2019. The poor performance of students have been attributed to poor supervision, teacher absenteeism, inadequate parental support and supervision of students, inadequate supply of teaching and learning materials, poor teacher commitment to duty among others. The Municipality is in the process of holding education sector stakeholder dialogue aimed at developing a comprehensive strategy address the challenge.

Figure 10: Trend analysis of BECE performance from 2017-2020



Free Senior High School (FSHS)

The Government policy of Free Senior High School is in full operation in all the Public Senior High and the Technical/Vocational Schools in the Municipality. Table 1.10 present enrolment of second cycle institutions in the Municipality. These schools require more infrastructure to accommodate the increasing student admission due to the free Senior High School policy.

Table 9: Enrolment of SHS students under the Free SHS policy

S/No.	Levels	DAY		BOARDING	
		MALE	FEMALE	MALE	FEMALE
1	Year 1	555	538	504	489
2	Year 2	482	402	859	473
3	Year 3	162	213	765	509
	Total	1199	1153	2128	1471

Source: GES, WMM, January 2020

6.1.12 1.2.13.2 State of Economic and Social Infrastructure

◆ Banking and other financial services

Financial institutions play a critical role in the transformation of any developing economy. The West Mamprusi Municipality is blessed with a number of financial institutions including the

Ghana Commercial Bank (GCB), the Agriculture Development Bank (ADB) and Bangmarigu Rural Bank. The introduction of mobile money transfer system has further strengthen the economic activities of the municipality as they provide door-to-door financial services to all segments of the society. Nearly every community in the municipality has at least a Mobile Money operator who provides financial services to the community. Functional Mobile Networks that support these services include MTN and Vodaphone. This sector does not only provide financial services to the people, but has also provided decent jobs for many young men and women. It has been estimated that, over thousand direct and indirect jobs have been created for the youth in the municipality through Mobile Money businesses.

However, all is not all with the introduction of these kind of businesses. There has been a number of robberies and series of attacks by armed men in many communities within the Municipality. Thousands of Ghana cedis have been lost and lives and properties destroyed as a result of these actions. The need for enhanced security is therefore non-negotiable.

◆ **Market Infrastructure**

The Municipality has a couple of local markets distributed across the communities These include the Walewale Market, Bulbia Market, Janga Market, Kparigu Market, Duu Market, Kpwsenkpe Market, Wulugu Market, Tinguri Market among others. However, only Walewale market has some infrastructure including market stalls, sheds and water. The rest of the markets have very poor and deplorable market infrastructure a situation that requires redress in the 20202-2025 MTDP.

◆ **Electricity**

Electricity power supply is important for socio-economic development of the people, as such, government over the years has made significant effort to invest in the sector. In the West Mamprusi Municipal, about seventy-six percent (76%) of the communities have been connected to the national grid. All the major communities such as Walewale, Gbimsi, Janga, Kparigu, Tinguri, Nasia, Wungu, Wulugu, Kpasenkpe, Duu, etc are all hooked to the national grid. However, there are still a good number of rural communities without electricity including sections of some of the large communities that require extensions. Though work has started in some of these communities under the SHEP 5 projects, the execution has unduly delayed and required attention.

Given the challenges experienced over the years in the traditional source of power generation in the country, the need for alternative sources of power becomes relevant. The Municipal has the potential for both large scale commercial solar energy generation due to the intensity of the sun around this area. It is therefore recommended that this sector be explored to improve on the power situation.

◆ **Transportation and Road Network**

The total road network of the Municipal is made up of primary, secondary and feeder roads. The Municipal is served by a total of 476.3Km of roads made up of 116km of trunk roads and 360km of feeder roads. The Ghana Highways Authority manages 116.3km of roads of which 19km is paved and the remaining 97.3km gravelled.

The total length of feeder roads in the Municipal is about 360km, made up of 211km of which needs re-gravelling whilst others need major construction to ensure all year round use. The Municipal has a road density of about 0.0950 / km² and is relatively one of the lowest in the country. It is important to indicate that road accessibility in the Municipal is very poor and this has had a ripple effect on the provision of other social and economic services.

The busiest route in the Municipal is the Tamale-Bolgatanga trunk road. The road that is asphalted passes through Walewale, the Municipal capital and other communities including Nasia, Gbimsi and Wulugu. Rehabilitation works is currently on-going on the Nasia-Janga road and the Wulugu-Kpasenkpe road.

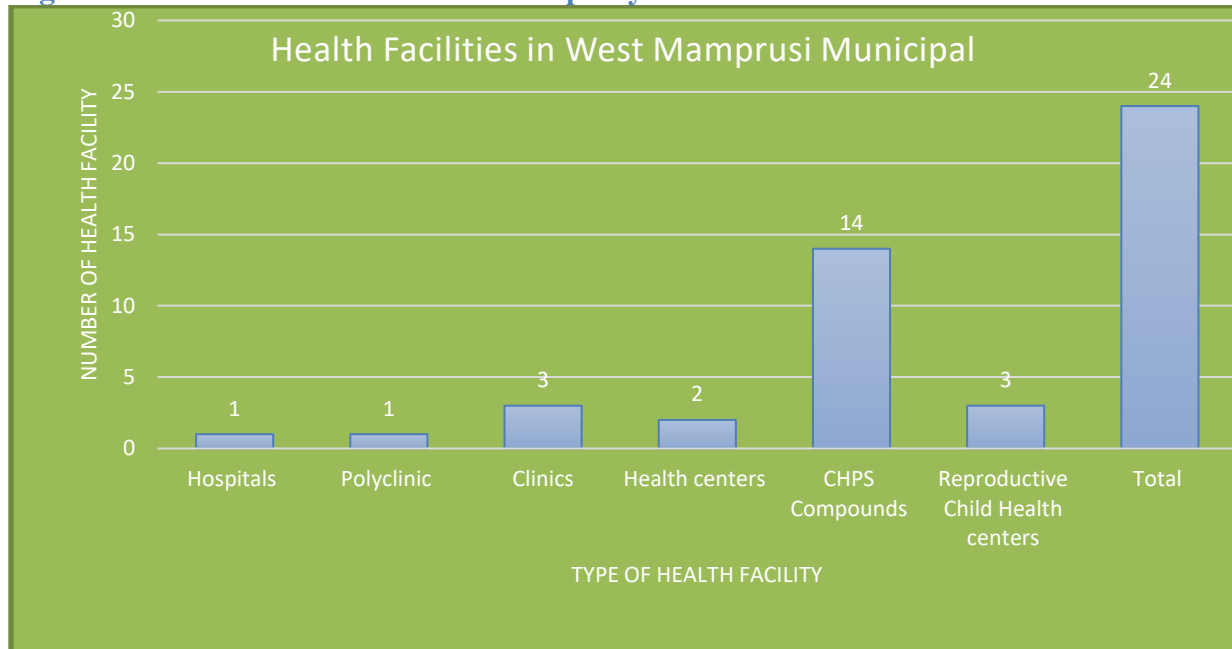
Feeder roads leading to major food-producing areas including Kparigu are in various stages of disrepair. The roads are in very bad condition and are virtually inaccessible during the rainy season. During this period, a number of settlements in the ‘Overseas’ area are cut off from the rest of the Municipal including the Municipal capital due to the over flooding of the rivers in the area west of the White Volta. This area is moderately accessible for more than half of the year through Bolgatanga (Bolgatanga Municipal, Navrongo (Kassena-Nankana Municipal) and Sandema and Fumbisi in the Builsa Municipal. The journey covers about 155km and this could be shortened considerably to about 45km through a direct link with Walewale.

The major means of transportation in the Municipal are the use of tricycles, motor bikes and cars. Other means include the donkey with cart. The major problem facing the road sector in the municipality is the difficulty in accessing the overseas communities in the Mamprugu Moaduri District. To resolve this challenge, there is the need to construct a bridge linking up the Municipal capital Walewale to the overseas area.

6.1.13 1.2.13.3 Health and Nutrition

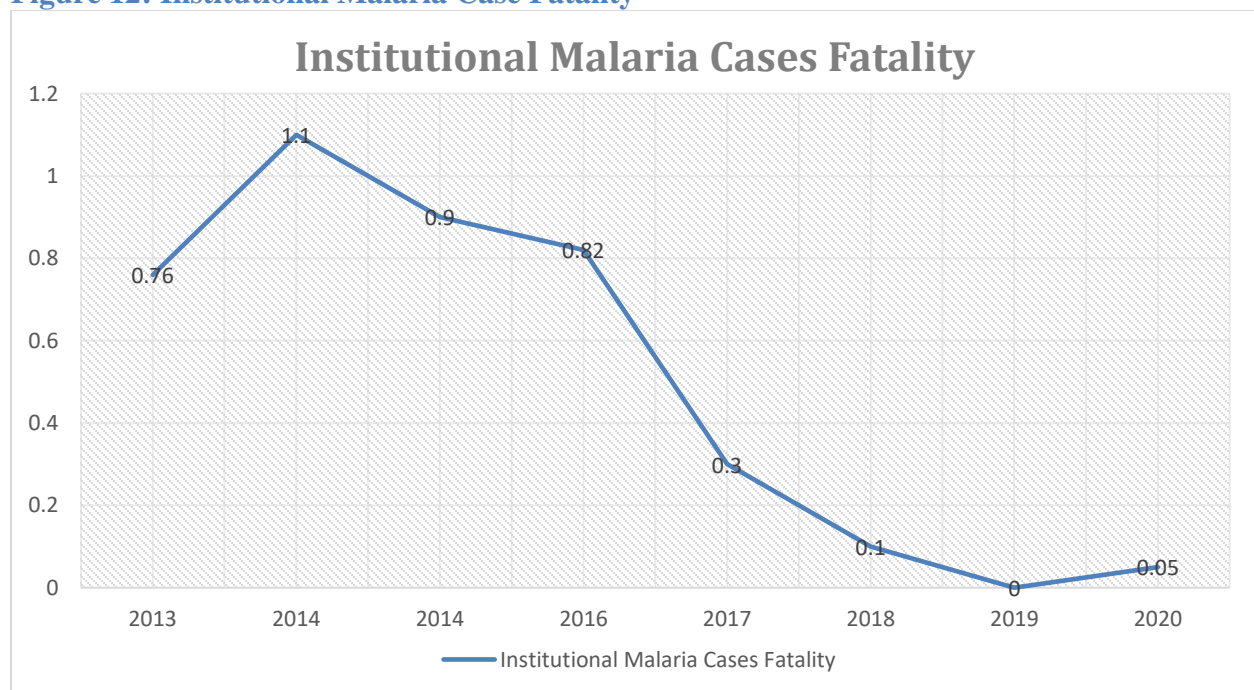
The Municipal health infrastructure is made up of one Hospital in Walewale, one Polyclinic in Janga, two Health centres at Kpasenkpe and Wulugu, three clinics (Our Lady of Rocio, Plan Parenthood Association of Ghana (PPAG Kparigu), and Nelson Mandela Clinic Walewale). Fourteen CHPS compounds at Gbeo, Nasia, Yama, Tinguri, Daboya, Duu, Nabari, Arigu, Guabulga and 2 Reproductive and Child Health (RCH) at Gbimsi, Walewale and Janga. Table 7 is a graphical illustration on the health facilities in the municipality.

Figure 11: Health facilities in the Municipality



Following the increasing population in the Municipality, there is pressure on the health facilities leading to expectant mothers resorting to traditional modes of delivery. The population of women in fertility age (WIFA) is 15,213 with an annual projected growth of 4%. Expected delivery is 4% while average Ante Natal Care (ANC) is 2.3. The Municipality has a Youthful Population which when given skills can be used in productive ventures. We have a crop of Youth who have completed Secondary Schools and can be assisted to explore their potentials.

Figure 12: Institutional Malaria Case Fatality



Following the increasing population in the Municipal, there is pressure on the health facilities leading to expectant mothers resorting to traditional modes of delivery. The population of women in fertility age (WIFA) is 15,213 with an annual projected growth of 4%. Expected delivery is 4% while average Ante Natal Care (ANC) is 2.3. The Municipal has a Youthful Population which when given skills can be used in productive ventures. We have a crop of Youth who have completed Secondary Schools and can be assisted to explore their potentials.

Figure 13: Skilled delivery coverage

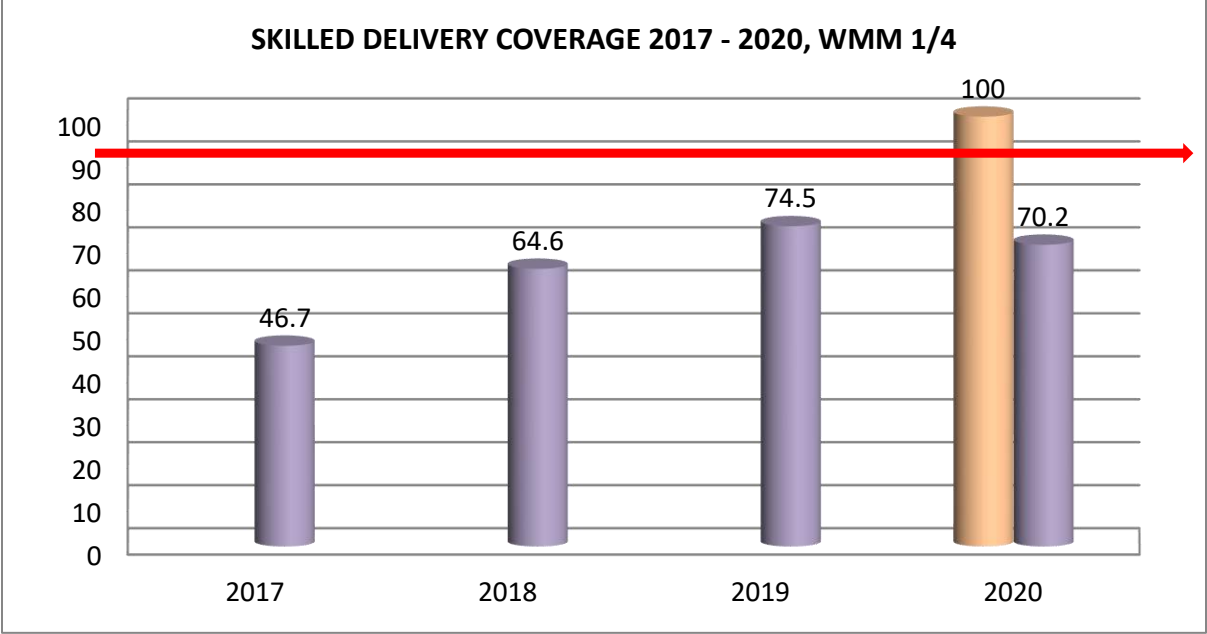
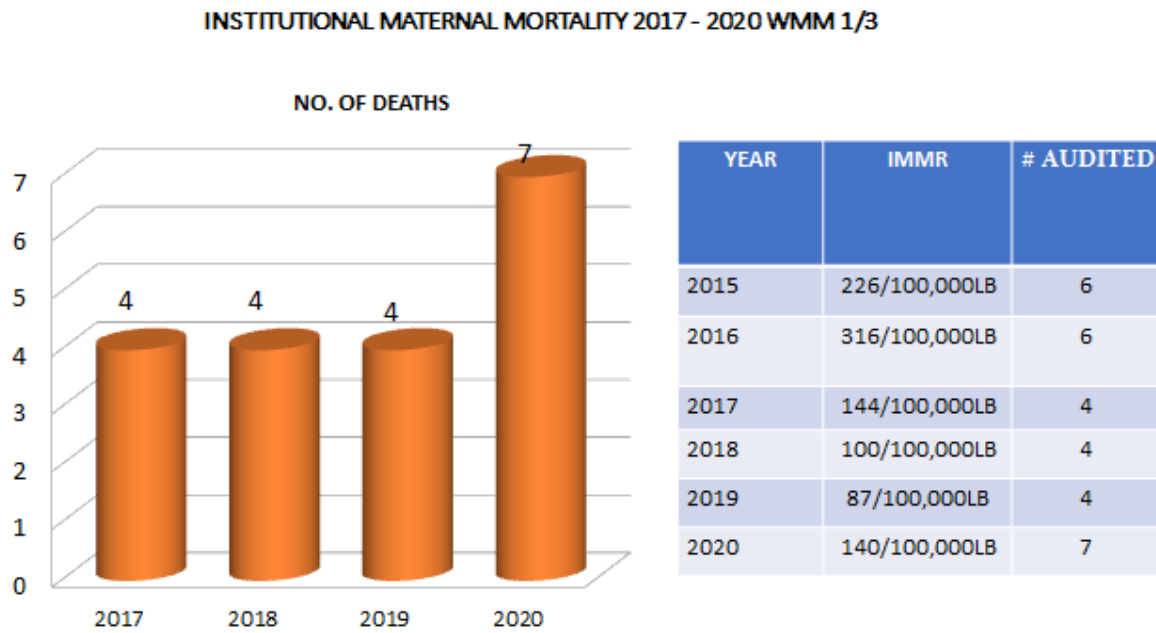
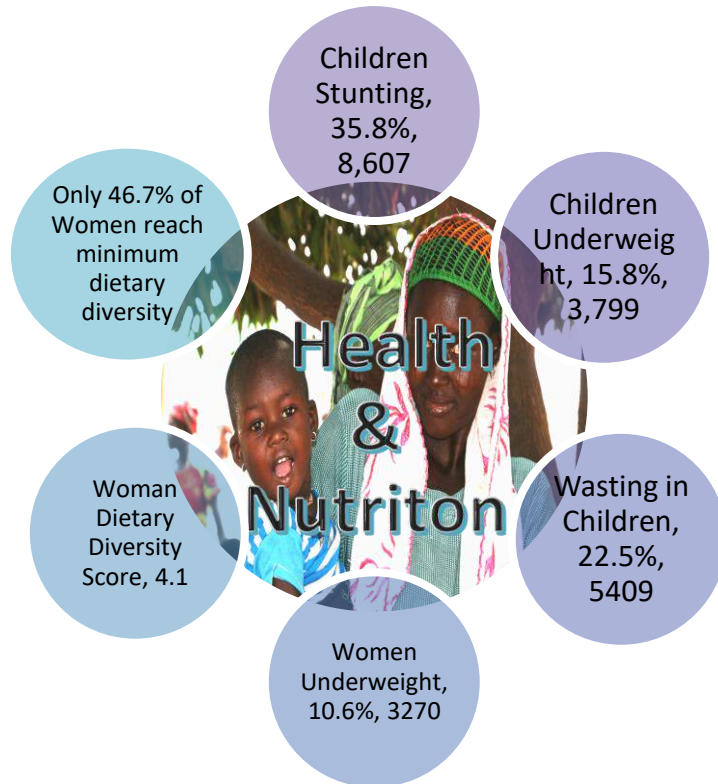


Figure 14: Institutional Maternal mortality



6.1.14 1.2.13.4 Nutrition

Infograph 1 focuses on health and nutrition of women and children in the Municipality. Percentages and absolute numbers are shown in the respective circles for stunting, wasting, children and women underweight as well as Women Dietary Diversity



The dietary diversity score of women in the Municipality is 4.1, which means that women consume on average 4-5 types of foods out of 10. About 46.7% reach the Minimum Dietary Diversity of 5 food groups.

6.1.15 1.2.13.5 Information Communication Technology (ICT)

ICT plays a vital role in the socio-economic development of any environment, particularly in the ordering of daily activities. It is one of the several means of sharing information either by voice or data. The flow of information plays an essential role in the diffusion of new technology and ideas at the level of individual enterprise, the industrial sector and the national economy.

There are two established Community Information Centers at Janga and Walewale that was constructed under the Ghana Investment Fund for Electronic Communication. These centers are however challenged with adequate computers and accessories, poor network facilities and other relevant accessories

Science, Technology and Innovation (STI)

Science, Technology and Innovation otherwise termed Information Communication Technology (ICT) play a vital role in the socio-economic development of any country, particularly in the ordering of daily activities. It is one of the several means of sending and receiving information either by voice or data. The scientific flow of information plays an essential role in the diffusion of new technology and ideas at the level of individual enterprises, the industrial sector and the national economy. The development of a vibrant ICT sector is a necessary condition for economic development. Prudent investment in telecommunication is crucial to expanding access and coverage.

Mobile phone has predominantly become a part of the daily communications gear. Owing a mobile phone has become a practical necessity and a symbol for social status. According to the International Telecommunication Union (ITU, 2013), Mobile-cellular penetration rates stand at 96% globally; 128% in developed countries; and 89% in developing countries. In Ghana, the National Communications Authority's (NCA) Mobile Voice subscription trend statistics (September, 2013) shows that there are 27,591,772 mobile subscribers. A total population of 73,016 constitutes the population 12 years and older in the Municipal. Out of this population, only 20.5 percent own a mobile phone. Of the male population, 27.5 percent own mobile phone while 14 percent of the female population owns the device.

The use of the internet is an integral part of ICT. In modern economies, life is organized around the internet through communication to transacting businesses. Internet is considered a general-purpose technology and access to broadband is regarded as a basic infrastructure, in the same way as electricity or roads. The 2010 Population and Housing Census of the GSS indicate that a total population of 646 persons 12 years and older use the internet facility. It is evident that internet usage in the Municipal is less than one percent (0.9%) of the total population 12 years and older. Out of the male population, 1.3 percent use the internet facility while less than one percent (0.5%) of the total female population 12 years and older also use the internet. The pattern is in line with the ITU's report which also suggests that globally, 37% of all women are online, compared with 41% of all men.

The poor usage of internet by citizenry affect the development of the Municipal as development plans could be placed on a portal to be accessed and necessary inputs made.

6.1.16 1.2.13.6 Water and sanitation

Over the years, there has been a gradual improvement in the provision of potable drinking water to the people of West Mamprusi Municipality through the support of development partners, such as Catholic Relief Services (CRS), Global Communities, World Bank, Water Vision Technology (WVT) and the Government of Ghana support projects.

However, access to potable drinking water remains a challenge in the Municipality. Quite significant proportion of the population (32%-40%) still relies on unwholesome sources of water such as open wells, rivers, dams etc for household consumption. This is because though some communities have been served with boreholes and small town water systems the facilities are either low yielding or seasonal in nature. In some cases, the population has outnumbered the available facilities. This exerts pressure on the available ones leading to frequent breakdowns. Also, many households are unable to connect to the small town water facilities at Walewale, Wungu and Gbimsi due to the high cost of connection. With a Projected Population of 161,726, only about 68% is served with potable water as at December 2020. The potable water supply is therefore inadequate to serve the needs of the people.

It is refreshing to note that the Municipality benefited from the Government policy of one-village-one dam with the rehabilitation of six small earth dams at different locations. However, this intervention is not without challenges as some of the dams were either destroyed before the end of the season or dried up during the dry season. It is therefore recommended that the government re-look at the designs of the dams to improve on their water holding capacities and the provision of

irrigation facilities to ensure maximum benefit from the policy. The Municipal will propose a comprehensive strategy in its Water and Sanitation Plan (2022-2025) which would be incorporated in to the MTDP to address the challenges.

The prevailing rainfall and the nature of the underlying rock formations determines to a large extent the ground and surface water potential for the Municipal. The present combination of heavy run-off, high evaporation and transpiration and low infiltration rates to recharge aquifers in some areas in the Municipal, contribute to water deficiencies especially to the west of the White Volta, the south around Fio area and eastern parts around Shelinvoya.

The Municipal is endowed with rivers especially at Nasia and Pwalugu which can be developed to complement Hydropower in the country. Others are at Gbimsi, Diani, Nayorku, Zangu-Vuga, Gbani, Wulugu, Wungu, Zangum and Nabari.

On the part of sanitation, though significant progress has been made in the area of liquid waste management, especially the construction of household latrines, the municipality still has challenges in both solid and liquid waste management. In the area of solid waste management, indiscriminate dumping of refuse as disposal method of solid waste is commonly practiced in the Municipality. This practice makes the communities in the Municipal filthy and can be breeding sites for housefly and other animals that can transmit communicable diseases such as cholera, typhoid etc. Limited supply of public refuse containers remains a challenge. Only about 3.5% of houses access the public refuse containers in the Municipal whose refuse are properly stored.

The major component of solid waste in the Municipal has been plastic waste due to the introduction of sachet water into the market known as (pure water) and other polythen use for almost everything we carry nowadays including food etc.

The Government of Ghana in collaboration with development partners and non-governmental organizations have put in a lot of efforts in dealing with open defecation in Ghana. The Municipal Assembly in collaboration with Global Communities, CRS and UNICEF have worked tirelessly over the last three years and has improved on the open defecation free status from 13.54% of communities in 2017 to 75% in 2020 using the concept of CLTS. Whiles continues efforts are being made to declare the rest of the communities, some ODF communities (8) are in the process of moving to the sanitized level. Table 1.14 presents ODF status in the Municipality.

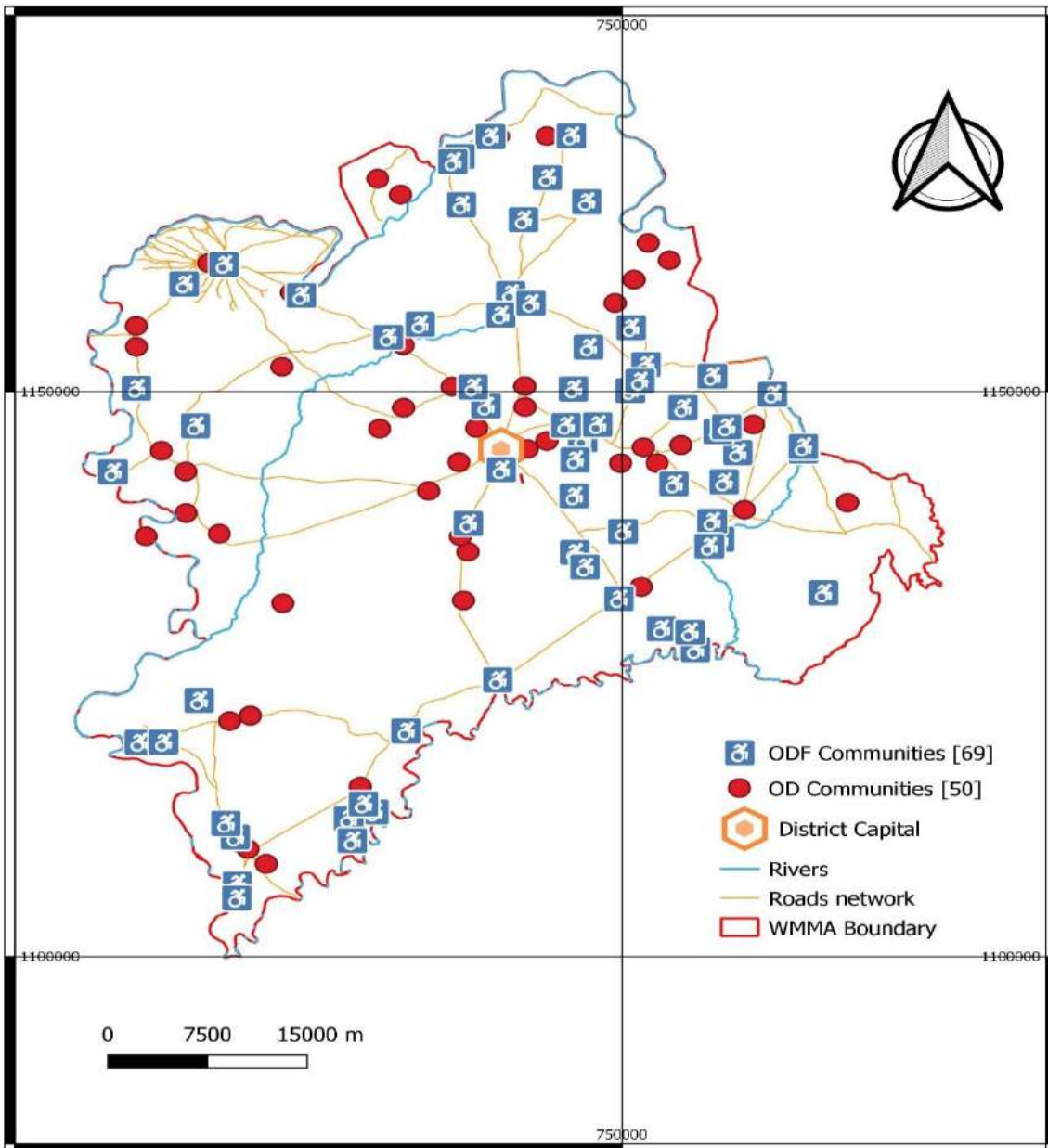
Table 10: Open defecation free (ODF) Status

S/N	Indicators	Baseline (2017)	2018	2019	2020
1	ODF coverage (%)	13.54	33.33	46%	72%
2	No. of HHs with latrines	3,038	4,757	7,415	7,650

WASH in schools and health facilities have also been improved through the construction of 24No. gender and disability friendly 4-seater KVIPs with pads changing rooms for basic schools and health facilities by CRS.

Figure 15: ODF Coverage

SPATIAL DISTRIBUTION OF OD & ODF COMMUNITIES IN WMMA. 2021



6.1.17 1.2.13.7 Social and Economic Issues

The economic base of the West Mamprusi Municipal is agriculture with an average 80% of the economically active population engaged in one form or other of it. Agricultural activities in the Municipal include crop production, livestock and fisheries. Only 54.7% of the 80% however farm as a major activity. Agriculture is basically on a subsistence level with smallholder farmers

representing the main users of agricultural land. The average farm sizes vary from 0.5 ha to 2.4 ha.

The predominant type of farm labour is from the immediate family (man, wife or wives and children) a factor that may account for the love of large families. There are however periods where farm labour is hired to supplement family labour. Because children in the family, especially those above 15 years are intensively used, there is an unacceptably low enrolment of children in primary and junior secondary school as captured under the current status of education in the Municipal.

The major crops farmed in the Municipal are sorghum, groundnut, millet, beans, maize and rice. Cash crops in this Municipal are rice, cotton, tobacco, vegetables and cashew. Crop production in the Municipal is on a subsistence basis whereby small farm holder farmers produce for family upkeep and occasional sale. There are however, a number of commercial farmers. The major crops grown in the Municipal are maize, millet, rice groundnuts, beans, sorghum, bambara beans and yams. These crops are grown during the rainy season. The total acreages cultivated and average yields for these crops are indicated in the table 2 on page 19. Dry season farming is done along the banks of the White Volta. Crops cultivated include leafy vegetables, tomatoes, onions, soybeans, pepper and tobacco.

The potential of dry season farming is limited by inadequate water-retaining structures including dams and dugouts. Major cash crops grown in the Municipal are groundnuts, rice tobacco and cotton. Vegetables grown include pepper, tomatoes and onions and this is done along the banks of the White Volta.

7

Table 11: Summary of key development issues

Development Dimension of the MTNPF 2018-2021	Identified issues from performance review and community needs assessment
ECONOMIC DEVELOPMENT	<ul style="list-style-type: none"> Poor market infrastructure Inadequate access to affordable credit Low capacity of SMEs Lack of agro-processing factories Low entrepreneurial skills Low adoption of new technologies Low participation of women in agriculture Poor tourism infrastructure High cost of inputs Inadequate irrigation facilities Inadequate Agriculture Extension officers Non availability of agriculture inputs dealers Low agricultural production and productivity Bush fires High incidence of livestock disease High rate of livestock theft Erratic rainfall pattern

	<p>High post-harvest losses</p> <p>Inadequate mechanization services eg tractors and combined harvesters</p> <p>High pest/disease incidence</p> <p>Indiscriminate use of weedicides</p>
SOCIAL DEVELOPMENT	<p>Inadequate classroom infrastructure</p> <p>Poor Kindergarten infrastructure</p> <p>Migration to urban areas for Kayayee especially girls</p> <p>Inadequate text books</p> <p>High illiteracy especially among women</p> <p>Inadequate school furniture</p> <p>Inadequate teacher accommodation</p> <p>Poor BECE performance</p> <p>Low level of ICT infrastructure</p> <p>Inadequate health infrastructure</p> <p>Low skilled deliveries</p> <p>Inadequate critical health staff – Doctor, Physician Assistants and Midwives</p> <p>Poor quality of health service delivery</p> <p>Increasing morbidity, mortality, and disability</p> <p>High rate of malnutrition among children</p> <p>Increased incidence of diet-related, non-communicable diseases</p> <p>High incidence of child marriage and teenage pregnancy</p> <p>High unemployment rate among the youth</p> <p>Inadequate coverage of social protection interventions like LEAP</p> <p>Poor environmental sanitation (high rate of open defecation)</p> <p>Lack of engineered land field site</p> <p>High incidence of poverty</p> <p>Inadequate public refuse containers resulting to huge refuse dumps</p> <p>Inadequate portable water supply to some communities</p> <p>Absence of special learning aid for PWD at basic school levels</p> <p>Poor records of births and deaths</p>
Environment, Infrastructure and Human Settlement	<p>Poor quality and inadequate road network linking some communities and service delivery points</p> <p>High incidents of road accidents</p> <p>Inadequate local plans (schemes) resulting to huge settlement development in unplanned areas</p> <p>Non-compliance with building codes</p> <p>Some communities are still not connected to the national grid</p> <p>Excessive floods in the Municipality</p> <p>Depletion of vegetative cover due to bush fires and sand winning</p> <p>Weak institutional capacity to manage disasters</p> <p>Inadequate ICT infrastructure across the municipality</p> <p>Poor and inadequate maintenance of infrastructure</p> <p>Increasing encroachments on public and vested lands</p> <p>Litigations associated with purchase and sale of land</p>

<p>Governance, corruption and public accountability</p>	<p>Low representation of women and vulnerable groups in decision making Weak capacity of some governance institutions Poor functionality of sub-district structures Politicization of local elections Poor coordination in preparation and implementation of development plans Weak spatial planning capacity at the local level Low Internally Generated Funds (IGF) High incidence of armed robbery and general insecurity High perception of corruption among public office holders and citizenry Poor coordination among CSOs Non availability of some critical departments in the municipality Low participation of women in local governance Inadequate capacity and logistic support to decentralized departments to enhance performance Low participation of citizenry in decision making Under resourced anticorruption institutions to fight corruption</p>
<p>EMERGENCY PLANNING AND RESPONSE (INCLUDING COVID-19 RECOVERY PLAN)</p>	<p>High Incidence of natural and human induced disasters Poor early warning systems Seasonal clashes between nomadic herdsmen and farmers Weak social protection system for victims of disasters Incidence of COVID-19, CSM and other pandemics</p>
<p>IMPLEMENTATION, COORDINATION, MONITORING AND EVALUATION</p>	<p>Weak programme/project coordination among stakeholders Inadequate logistics for effective M&E Weak M&E systems and different reporting timelines among local stakeholders</p>

2.2 2023 AAP

Annex 1 Contain the Programs/Projects/Activities extracted from the MTDP (2018-2021) for implementation in the year 20

2023 ANNUAL ACTION PLAN

ECONOMIC DEVELOPMENT

Goal: Build a Prosperous Country

Programme (PBB)	Sub-programme	Broad Activities	Location	Time frame (year)				Cost			Programme status		Implementing institution	
				Q 1	Q 2	Q 3	Q 4	GO G	IGF	Oth ers	New	On-going	Lead	Collaboration
Economic development	Trade, Industry and Tourism Services	Provide technical training to Master Craft Persons in the Municipality.	Walewale					5,000.00		3,000.00			BAC/G EA	REP/MCF
Economic development	Trade, Industry and Tourism Services	Conduct LED stakeholder mapping and capacity needs assessment of LED stakeholders	Entire Municipality							45,000.00			BAC/PFP	DPIC/MPCU
Economic development	Trade, Industry and Tourism Services	Organize capacity building programme for LED stakeholders for effective LED governance and private sector participation	Walewale							25,000.00			BAC/PFP	DPIC/MPCU
Economic development	Trade, Industry and Tourism Services	Organize LED stakeholders fora and quarterly LED platform meetings for knowledge and	Walewale							50,000.00			BAC/PFP	DPIC/MPCU

Programme (PBB)	Sub-programme	Broad Activities	Location	Time frame (year)				Cost			Programme status		Implementing institution	
				Q 1	Q 2	Q 3	Q 4	GO G	IGF	Oth ers	New	On-going	Lead	Collaboration
		experience sharing												
Economic development	Trade, Industry and Tourism Services	Organize short-term training programme for of 100 women (5 groups) in 4 communities on Rice Parboiling and support them with processing equipment to establish businesses	Walewale, Kparigu and Kpasenkpe clusters							15,1902.49			BAC/PFP	DPIC/MPCU
Economic development	Trade, Industry and Tourism Services	Build capacities of 50 young women (5 groups) in 5 communities on bakery and support them with processing equipment to establish businesses	Walewale and Kpasenkpe clusters							85,000.00			BAC/PFP	DPIC/MPCU
Economic development	Trade, Industry and Tourism Services	Form and build capacities of 40 VSLA groups and provide them with start-up kits to	Walewale, Kparigu and Kpasenkpe clusters							55,000.00			BAC/PFP	DPIC/MPCU

Programme (PBB)	Sub-programme	Broad Activities	Location	Time frame (year)				Cost			Programme status		Implementing institution	
				Q 1	Q 2	Q 3	Q 4	GO G	IGF	Oth ers	New	On-going	Lead	Collaboration
		promote rural savings												
Economic development	Trade, Industry and Tourism Services	Organize targeted financial management training for existing CIGs (VSLAs) and facilitate access to credit from financial institutions	Walewale, Kparigu and Kpasenkpe clusters							50,000.00			BAC/PFP	DPIC/MPCU
Economic development	Trade, Industry and Tourism Services	Provide Business Counselling to selected Clients and Business	District Wide					3,000.00		1,500.00			BAC/G EA	REP/MCF
Economic development	Trade, Industry and Tourism Services	Facilitate the development of 3No. tourist sites	Walewale					15,000.00		2,500.00			BAC/G EA	REP/MCF
Economic development	Trade, Industry and Tourism Services	Construction of 1No. 10-Unit Lockable Stores	Walewale Market							622,409.29			MA	DoW
Economic development	Trade, Industry and Tourism Services	Gravelling and construction of drains at Duu market	Duu							260,000			MA	DoW
Economic Development	Agricultural Services and Management	Carryout monitoring and supervisory visits	Municipality wide					25,000		80,400			Dept of Agric	MAG

Programme (PBB)	Sub-programme	Broad Activities	Location	Time frame (year)				Cost			Programme status		Implementing institution	
				Q 1	Q 2	Q 3	Q 4	GO G	IGF	Others	New	On-going	Lead	Collaboration
Economic Development	Agricultural Services and Management	Build capacity of 50 farmers and other value chain actors on value chain linkage	Walewale					1,000		1,000			Dept of Agric	SAPIP
Economic Development	Agricultural Services and Management	Carryout staff trainings on post-harvest loss assessment and determination	Walewale					1,500					Dept of Agric	
Economic Development	Agricultural Services and Management	Carryout staff trainings on improved crop production and productivity	Walewale							1,500			Dept of Agric	MAG, SAPIP, SIP
Economic Development	Agricultural Services and Management	Carryout staff trainings on livestock production and productivity	Walewale					500		1,000			Dept of Agric	SIP
Economic Development	Agricultural Services and Management	Carryout 4 demonstration on fortification of local diets with highly nutritious grains/legumes/vegetables	Municipality					2,000		2,800			Dept of Agric	SAPIP, MAG
Economic Development	Agricultural Services and Management	Train 30 rice processors on good quality rice processing practices	Municipality					1,000		1,000			Dept of Agric	SAPIP, TAMANNA Foundation

Programme (PBB)	Sub-programme	Broad Activities	Location	Time frame (year)				Cost			Programme status		Implementing institution		
				Q 1	Q 2	Q 3	Q 4	GO G	IGF	Oth ers	New	On-going	Lead	Collaboration	
Economic Development	Agricultural Services and Management	Supervise and monitor implementation of Planting and Rearing for Food and Jobs (PFJ & RFJ)	Municipality					2,200						Dept of Agric	
Economic Development	Agricultural Services and Management	Organize RELC Planning Session	Walewale					1,700		1,100				Dept of Agric	SARI, CEAL
Economic Development	Agricultural Services and Management	Organise National Farmers' Day Celebration	Walewale					60,000						Dept of Agric	
Economic Development	Agricultural Services and Management	Construction of 2No. irrigation dams	Tiya and Duu								3,268,000			NDA	GIDA
Economic Development	Agricultural Services and Management	Sensitize farmers through radio on bushfire prevention, control and management	Walewale					1,600						Dept of Agric	National Fire Service
Economic Development	Agricultural Services and Management	Train 40 agro-processors on value addition, packaging and food safety	Walewale					1,300						Dept of Agric	BAC
Economic Development	Agricultural Services and Management	Collect and compile market prices of agricultural produce and inputs	Walewale					2,400						Dept of Agric	
Economic Development	Agricultural Services and Management	Establish demonstration on rice and soya in	Selected communities					1,000		2,000				Dept of Agric	TENSUI - JICA

Programme (PBB)	Sub-programme	Broad Activities	Location	Time frame (year)				Cost			Programme status		Implementing institution	
				Q 1	Q 2	Q 3	Q 4	GO G	IGF	Others	New	On-going	Lead	Collaboration
Economic Development	Agricultural Services and Management	Organize field trip for 50 women farmers to good Climate Smart Agricultural Practices demonstration sites	Entire municipality							2,600			Dept of Agric	GASIP
Economic Development	Agricultural Services and Management	Support with regular weather information updates and link farmers to weather information service providers	Entire municipality							3,000.00			Dept of Agric	NADMO/G MET, NABOCADO
Economic development	Agricultural services and management	Training of farmers on the use of drought tolerant and early maturing crops, crop diversification and timely planting	Entire municipality							5,000.00			Dept of agric	Dps
Economic development	Agricultural services and management	Training of farmers to develop and utilize cropping calendars to avoid crop loss to floods	Selected communities							2,000			Dept of agric	Nabocado
Economic development	Agricultural services and management	Training of farmers on various moisture retention practices	Selected communities							2,500			Dept of agric	Nabocado

Programme (PBB)	Sub-programme	Broad Activities	Location	Time frame (year)				Cost			Programme status		Implementing institution	
				Q 1	Q 2	Q 3	Q 4	GO G	IGF	Others	New	On-going	Lead	Collaboration
Economic development	Agricultural services and management	Training of farmers on pests and disease control using local innovations	Selected communities							2,500			Dept of agric	Nabocado
Economic Development	Agricultural Services and Management	Organize mass Sensitization, immunization and vaccination of livestock	Entire municipality										Dept of Agric	DPs
Economic Development	Agricultural Services and Management	Conduct yield studies on 7 selected crops	Entire municipality					2,000		3,000			Dept of Agric	
Economic Development	Agricultural Services and Management	Establish 6 demonstrations on conservation agricultural practices	Selected communities					2,000		2,800			Dept of Agric	GASIP
Economic Development	Agricultural Development	Organize monthly staff review meeting	Walewale							2,448			Dept of Agric	
Economic Development	Agricultural Development	Maintenance of office equipment and official vehicle/ motor bikes	Walewale					3,400		10,000			Dept of Agric	
Economic Development	Agricultural Development	Insure official vehicle	Walewale							2,600			Dept of Agric	
Economic Development	Agricultural Development	Purchase electrical power for office and stationery	Walewale					2,000		2000			Dept of Agric	

Programme (PBB)	Sub-programme	Broad Activities	Location	Time frame (year)				Cost			Programme status		Implementing institution		
				Q 1	Q 2	Q 3	Q 4	GO G	IGF	Oth ers	New	On-going	Lead	Collaboration	
Economic Development	Agricultural Development	Renovate official residence of Municipal Director of Agriculture	Walewale					120,000						Municipal Assembly	MWD/DoA
Economic Development	Agricultural Development	Rehabilitation of 2No. small earth dams	Nabari and Guabuliga							1,700,000.00				WMMA	GPSNP/GIDA

SOCIAL DEVELOPMENT

Goal: Create opportunities for all

Programme (PBB)	Sub-programme	Broad Activities	Location	Time frame (year)				Cost			Programme status		Implementing institution		
				Q1	Q2	Q3	Q4	GOG	IGF	Others	New	Ongoing	Lead	Collaboration	
Social service delivery	Education, youth & sports and Library services:	Support to District Education Fund	Entire Municipality					89,323.55						DoE	MA
Social service delivery	Education, youth & sports and Library services:	Completion of 2No. 3 Classroom blocks with ancillary facilities	Tinguri, Namiyela					192,000						DoE	MA/MWD
Social service delivery	Education, youth & sports and Library services:	Construction and furnishing of 3No. 3 unit classroom blocks	Fio, Wungu, Kukua and					570,000		1,800,000.00				DoE	MA/MWD

Programme (PBB)	Sub-programme	Broad Activities	Location	Time frame (year)				Cost			Programme status		Implementing institution	
				Q1	Q2	Q3	Q4	GOG	IGF	Others	New	Ongoing	Lead	Collaboration
Social service delivery	Education, youth & sports and Library services:	Construction and furnishing of 1No. 6 unit classroom block	Bugya-paala					650,000					DoE	MA/MWD
Social service delivery	Education, youth & sports and Library services:	Construction and furnishing of 1No. Teachers quarters	Sooba							280,000			DoE	MA/MWD
Social service delivery	Education, youth & sports and Library services:	Rehabilitation of Storm Damaged/Ripped-off Schools	Nakpaya and other selected schools					280,000					MWD	DoE
Social service delivery	Education, youth & sports and Library services:	Supply of 1,000 pieces of dual desk furniture	Selected schools					216,000		144,000			DoE	MA/MWD
Social service delivery	Education, youth & sports and Library services:	Support to Independence Day and My First Day at School	Walewale					50,000					DoE	MA
Social service delivery	Education, youth & sports and Library services:	Support to Sports, Science and Cultural Activities	Entire municipality					20,000					DoE	MA

Programme (PBB)	Sub-programme	Broad Activities	Location	Time frame (year)				Cost			Programme status		Implementing institution	
				Q1	Q2	Q3	Q4	GOG	IGF	Others	New	Ongoing	Lead	Collaboration
Social service delivery	Education, youth & sports and Library services:	Provide support for Trainees & Tertiary Students for Needy Students	Entire municipality					40,000					MP	DoE
Social service delivery	Public Health Services and management	Construction and furnishing of 3No. CHPS compounds	Gbimsi, Yama					580,000		889,000			DoH	MA/MWD
Social service delivery	Public Health Services and management	Completion of Doctors bungalow	Walewale					370,000.00					DoH	MA/MWD
Social service delivery	Public Health Services and management	Completion and furnishing of 1No. Administration block	Kpasenkpe Health Center					280,000					DoH	MA/MWD
Social service delivery	Public Health Services and management	Connection of electricity to CHPs compound	Zangu vuga					50,000					DoH	MA/MWD
Social service delivery	Public Health Services and management	District response initiative on HIV/AIDS/TB	Entire municipality					22,330.89					DoH	HODs
Social service delivery	Public Health Services and management	Malaria prevention	Entire municipality					20,093					DoH	HODs

Programme (PBB)	Sub-programme	Broad Activities	Location	Time frame (year)				Cost			Programme status		Implementing institution	
				Q1	Q2	Q3	Q4	GOG	IGF	Others	New	Ongoing	Lead	Collaboration
Social service delivery	Public Health Services and management	Medical Support	Entire municipality					20,000					DoH	MP,MA
Social service delivery	Public Health Services and management	Support for health outreach programmes/Public Health Services	Entire municipality					2,030					DoH	HODs
Social service delivery	Public Health Services and management	Support for Clinical Services	Entire municipality					30,120					DoH	HODs
Social service delivery	Public Health Services and management	Procurement of Office supplies and consumables.	Walewale					20,000					DoH	MP/PO
Social service delivery	Social Welfare and community services	Construction of 1No. Social Centre	Yama							315,264.95			DoFS W/CD	PO
Social service delivery	Social Welfare and community services	Organize inter-community dialogue platforms on youth vulnerability issues; conflict, climate change, girl child	All clusters					25,000.00					SW/CD, GES	GDO,

Programme (PBB)	Sub-programme	Broad Activities	Location	Time frame (year)				Cost			Programme status		Implementing institution	
				Q1	Q2	Q3	Q4	GOG	IGF	Others	New	Ongoing	Lead	Collaboration
		education, inclusion, Youth migration and teenage pregnancy												
Social service delivery	Social Welfare and community services	Procurement of Office supplies and consumables.	Walewale							15,000			DoFS W/CD	PO
Social service delivery	Social Welfare and community services	Procurement of Office furniture and maintenance of motor bikes	Walewale					6,500					DoFS W/CD	PO
Social service delivery	Social Welfare and community services	Combating Domestic violence and human trafficking	Entire municipality					4,000					DoSW/CD	GPS
Social service delivery	Social Welfare and community services	Advocacy/capacity building	Entire municipality					19,000					DoSW/CD	HoDs
Social service delivery	Social Welfare and community services	Support & build the capacity of PWDs	Entire municipality					267,000.00					DoSW/CD	HoD
Social service delivery	Social Welfare and community services	Conferences/ National celebrations	Walewale					20,000					DoSW/CD	HoD

Programme (PBB)	Sub-programme	Broad Activities	Location	Time frame (year)				Cost			Programme status		Implementing institution	
				Q1	Q2	Q3	Q4	GOG	IGF	Others	New	Ongoing	Lead	Collaboration
Social service delivery	Social Welfare and community services	Administrative/monitoring	Walewale					10,000					DoSW/CD	DoF
Social service delivery	Social Welfare and community services	Construction of access road to the PWD resource center	Walewale					75,000					DoSW/CD	DOW
Social service delivery	Social Welfare and community services	Child right promotion and protection	Entire municipality							30,000			DoSW/CD	AM,TA
Social service delivery	Social Welfare and community services	Support implementation of Social intervention programmes (LEAP/NHIS)	Entire municipality					5,000					DoSW/CD	AM,TA
Social service delivery	Social Welfare and community services	Public sensitization and registration of Births and Deaths	Entire municipality					6,000					B&DO	DoH
Social service delivery	Gender equality	Organize public sensitization on Sexual and Gender-Based Violence	Entire municipality					2,500					GDO	DoH/CSOs / TA
Social service delivery	Gender equality	Community engagement on the unpaid care work of women	Entire municipality					1,800					GDO	HODs/CSOs/ TA

Programme (PBB)	Sub-programme	Broad Activities	Location	Time frame (year)				Cost			Programme status		Implementing institution		
				Q1	Q2	Q3	Q4	GOG	IGF	Others	New	Ongoing	Lead	Collaboration	
Social service delivery	Gender equality	Advocacy and lobbying of Chiefs to improve women access to productive land	Entire municipality						2,000					GDO	HODs/CSOs/ TA
Social service delivery	Gender equality	Identify and build capacity of women to participate in local elections	Entire municipality					2,300						GDO	HODs/CSOs/ TA
Social service delivery	Gender equality	Carry out career guidance education for JHS and SHS girls	Entire municipality						1,200					GDO	DoE/CSOs
Social service delivery	Gender equality	Organize training for school girls on menstrual hygiene and mgt.	Entire municipality					2,100						GDO	DoH/DoE/CSOs,
Social service delivery	Environmental Health and sanitation Services	Construction of engineered land field site	Walewale							200,000				EHU	Zoom lion
Social service delivery	Environmental Health and sanitation Services	Completion of 1No.institutional latrine (8 seater WC)	Walewale market					87,000						EHU	DoW
Social service delivery	Environmental Health and sanitation Services	Procurement of Tools and cleaning Materials for the Env'tal Health Unit	Walewale					9,000						EHU	PO

Programme (PBB)	Sub-programme	Broad Activities	Location	Time frame (year)				Cost			Programme status		Implementing institution	
				Q1	Q2	Q3	Q4	GOG	IGF	Others	New	Ongoing	Lead	Collaboration
Social service delivery	Environmental Health and sanitation Services	Support implementation of CLTS	Entire municipality					20,000		20,000			EHU	DoW, CRS/UNICEF/
Social service delivery	Environmental Health and sanitation Services	Clean up campaigns	Entire municipality					7,000					EHU	DoW/HoDs/Zoom lion
Social service delivery	Environmental Health and sanitation Services	Solid waste management	Entire municipality					97,000					EHU	DoW/Zoom lion
Social service delivery	Environmental Health and sanitation Services	Liquid waste management	Entire municipality					32,000					EHU	DoW/HoDs/Zoom lion
Social service delivery	Environmental Health and sanitation Services	CRS support for WASH interventions	Entire municipality							1,400,000			EHU	CRS, DoH, DoE, DoSW/CD Planning
Social service delivery	Environmental Health and sanitation Services	Facilitate acquisition of land for relocation of Walewale cemetery	Walewale					100,000					EHU	TA, DoH
Social service delivery	Environmental Health and sanitation Services	Monitoring of CLTS and other WASH interventions	Entire municipality						5,000				EHU	MICCS
Social service delivery	Environmental Health and sanitation Services	Maintenance of WASH facilities in schools	Entire municipality					30,000					EHU	DoW

Programme (PBB)	Sub-programme	Broad Activities	Location	Time frame (year)				Cost			Programme status		Implementing institution	
				Q1	Q2	Q3	Q4	GOG	IGF	Others	New	Ongoing	Lead	Collaboration
	sanitation Services													

ENVIRONMENT, INFRASTRUCTURE AND HUMAN SETTLEMENTS

Goal: Safeguard the natural environment and ensure a resilient built environment

Programme (PBB)	Sub-programme	Broad Activities	Location	Time frame (year)				Cost			Programme status		Implementing institution	
				Q1	Q2	Q3	Q4	GOG	IGF	Others	New	Ongoing	Lead	Collaboration
Environmental management	Natural Resource Conservation and Management	Establishment of 10 hectare cashew plantation	Daboya					200,000					DoA	FC
Environmental management	Natural Resource Conservation and Management	Maintenance of 30 hectare cashew plantations	Bulbia and Guabuliga					200,000					DoA	FC
Environmental management	Natural Resource Conservation and Management	Support the implementation in the green Ghana initiative	Entire municipality							140,000			DoA/NADMO/GFS	FC
Environmental management	Natural Resource Conservation and Management	Institute by-law to help reduce the indiscriminate	Entire municipality							1000.00			DoA	FC/NADMO/NA BOCAD O

Programme (PBB)	Sub-programme	Broad Activities	Location	Time frame (year)				Cost			Programme status		Implementing institution	
				Q1	Q2	Q3	Q4	GOG	IGF	Others	New	On-going	Lead	Collaboration
		cutting of trees												
Infrastructure development and management	Public Works, Rural Housing and Water Management	Maintenance, and repair of furniture, general equipment, and vehicles,	Walewale					120,000	13,000				DoW	CA,HODs
Infrastructure development and management	Public Works, Rural Housing and Water Management	Maintenance and repair of office buildings	Walewale					17,000					DoW	CA,HODs
Infrastructure development and management	Public Works, Rural Housing and Water Management	Rehabilitation of 2No. staff quarters	Walewale					200,000					DoW	CA,HODs
Infrastructure development and management	Public Works, Rural Housing and Water Management	Rehabilitation of 10No. boreholes	Wulugu, Kurugu, Naamiyela, Suhuluya etc					60,000	15,000				DoW	MP,AM, TA,
Infrastructure development and management	Public Works, Rural Housing and Water Management	Drilling of 5No. boreholes	Bugyakura, Binduri, Mimima, , Zangu-					100,000	100,000				DoW	AM,TA, CRS, MP

Programme (PBB)	Sub-programme	Broad Activities	Location	Time frame (year)				Cost			Programme status		Implementing institution	
				Q1	Q2	Q3	Q4	GOG	IGF	Others	New	On-going	Lead	Collaboration
			Vuga Jagsi etc											
Infrastructure development and management	Public Works, Rural Housing and Water Management	Support to MWST and Water supply systems	Walewale						28,000					MWST MA/MP
Infrastructure development and management	Public Works, Rural Housing and Water Management	Rehabilitation of Dimea-Guabulig-Wulugu road	Dimea-Guabulig-Wulugu					-		-				DoW FR,
Infrastructure development and management	Public Works, Rural Housing and Water Management	Construction of 2No. culverts	Gaagbini							-				DoW HW
Infrastructure development and management	Public Works, Rural Housing and Water Management	Procurement of stationery and Office supplies	Walewale					20,000	10,000					
Infrastructure development and management	Public Works, Rural Housing and Water Management	Project inspection and supervision.	Entire Municipality					10,000	6,000					DoW MPCU, Contractors
Infrastructure development and management	Public Works, Rural Housing and Water Management	Maintenance and installation of Street Lights	Entire Municipality					100,000	45,000					DoW VRA
Infrastructure development	Public Works, Rural Housing	Supply of 200 electrical	Selected communities					200,000						DoW VRA,AM

Programme (PBB)	Sub-programme	Broad Activities	Location	Time frame (year)				Cost			Programme status		Implementing institution	
				Q1	Q2	Q3	Q4	GOG	IGF	Others	New	On-going	Lead	Collaboration
and management	and Water Management	poles and cables												
Infrastructure development and management	Spatial planning	Preparation of structural plans	Walewale					20,000		20,000			DoPP	DoWs/LUSPC
Infrastructure development and management	Spatial planning	Preparation of local plans	Walewale, Kukua					20,000	7,000				DoPP	LUSPC
Infrastructure development and management	Spatial planning	Acquisition and documentation of Assembly lands	Walewale					180,000	15,000				DoPP	LUSPC
Infrastructure development and management	Spatial planning	Street naming and property addressing	Walewale, Gbimsi, Sayoo, Jaagbani					20,000					DoPP	SAT
Infrastructure development and management	Spatial planning	Organize radio sensitization on land use and management	Walewale					2,000					DoPP	LUSPC
Infrastructure development and management	Spatial planning	Organise Land use and spatial planning Committee meetings	Walewale						20,000				DoPP	LUSPC

Programme (PBB)	Sub-programme	Broad Activities	Location	Time frame (year)				Cost			Programme status		Implementing institution	
				Q1	Q2	Q3	Q4	GOG	IGF	Others	New	On-going	Lead	Collaboration
Infrastructure development and management	Spatial planning	Procurement of office equipment and fuel	Walewale					10,000					DoPP	PO,DoF

GOVERNANCE, CORRUPTION AND PUBLIC ACCOUNTABILITY

Goal: Maintain a stable, united and safe society

Programme (PBB)	Sub-programme	Broad Activities	Location	Time frame (year)				Cost			Programme status		Implementing institution	
				Q1	Q2	Q3	Q4	GOG	IGF	Others	New	On-going	Lead	Collaboration
Management and Administration	General administration:	Provision for protocol services (state protocols and donations)	Entire municipality						15,000				CA	HODs
Management and Administration	General administration:	Payment of transfer grants	Walewale						8,000				CA	HODs
Management and Administration	General administration:	Procurement management tender committee meetings/ adverts,	Walewale					5,000	8,500				PO	TCM
Management and Administration	General administration:	Provision for utilities and fuel	Walewale						49,500				DoF	

Programme (PBB)	Sub-programme	Broad Activities	Location	Time frame (year)				Cost			Programme status		Implementing institution	
				Q1	Q2	Q3	Q4	GOG	IGF	Others	New	On-going	Lead	Collaboration
Management and Administration	General administration:	Procurement of office equipment and logistics (Office supplies and accessories)	Walewale					40,000					PO	HODs
Management and Administration	General administration	Support for community initiated/self-help projects	Selected communities					223,308.89					MA	AM
Management and Administration	General administration	Procurement and installation of power plant	Municipal Office Walewale					60,000					PO	MWD
Management and Administration	General administration	Support for traditional authorities	Entire Municipality					60,000					MA	TA
Management and Administration	General administration	Provision for Official/National celebrations (State protocols)	Walewale					100,000					MCD	HODs
Management and Administration	General administration	Support to revamp Zonal Councils	Tinguri Kpasenkpe, Kparigu, etc					95,000					MCD	AM
Management and Administration	General administration	Workshops and seminars	Walewale					43,000	20,000				MCD	AM

Programme (PBB)	Sub-programme	Broad Activities	Location	Time frame (year)				Cost			Programme status		Implementing institution	
				Q1	Q2	Q3	Q4	GOG	IGF	Others	New	On-going	Lead	Collaboration
Management and Administration	General administration	Organize MUSEC meetings	Walewale					30,000	10,000				MCE/MCD	GPS,GFS
Management and Administration	General administration	Conflict resolution and management	Walewale					200,000	10,000				MCE/MCD	TA, GPS,GFS
Management and Administration	General administration	Hon. MCE's Community Engagements	Entire municipality					30,000					MCE	HODs
Management and Administration	General administration	Completion and furnishing of 1No. Police stations	Janga					626,000					MA/MWD	GPS
Management and Administration	General administration	Procurement of 4No. motorbikes	Walewale					40,00-					PO	ETC
Management and Administration	Legislative Oversight:	Organize Sub-committees and General Assembly meetings	Walewale					30,000	15,000				CA	HODs
Management and Administration	Legal	Gazette FF resolution & bye laws	Walewale					20,000	5,000				Budget Unit	DoF,MA
Management and Administration	Planning and Budgeting,	Review of 2023 AAP/ composite budget	Walewale					41,200					Planning unit/ Budget unit	HoDs

Programme (PBB)	Sub-programme	Broad Activities	Location	Time frame (year)				Cost			Programme status		Implementing institution	
				Q1	Q2	Q3	Q4	GOG	IGF	Others	New	On-going	Lead	Collaboration
Management and Administration	Planning and Budgeting,	Preparation of 2024 AAP and composite budget	Walewale					45,000.00					Planning unit/ Budget unit	HoDs
Management and Administration	Planning and Budgeting,	Organize quarterly MPCU meetings	Walewale					9,000					Planning unit	HoDs
Management and Administration	Planning and Budgeting,	Organize quarterly Budget committee meetings	Walewale					8,000					Budget unit	HoDs
Management and Administration	Planning and Budgeting,	Organise Budget Guidelines Training Workshop (including budgeting reforms from Budget Manual)	Walewale					6,000					Budget unit	HoDs
Management and Administration	Planning and Budgeting,	Budget Production Workshop	Walewale					5,500.00					Budget unit	Finance /Planning/RC C/GIZ
Management and Administration	Human Resource Management	Procurement of 2No.laptop computer and printer	Walewale					7,000					DoHRM	PU

Programme (PBB)	Sub-programme	Broad Activities	Location	Time frame (year)				Cost			Programme status		Implementing institution	
				Q1	Q2	Q3	Q4	GOG	IGF	Others	New	On-going	Lead	Collaboration
Management and Administration	Human Resource Management	Organize 2No. staff durbar	Walewale					6,000					DoHRM	HODs
Management and Administration	Human Resource Management	Staff capacity building	Walewale					60,000					DoHRM	HODs, AM
Management and Administration	Human Resource Management	Staff management	Walewale						4,000				DoHRM	HODs, AM
Management and Administration	Finance	Update revenue data base	Entire municipality					15,000					Budget unit	DoF
Management and Administration	Finance	Valuation of selected properties	Walewale					35,000					Budget unit/DoF	HODs, TA
Management and Administration	Finance	Procurement of safe	Walewale					10,000					DoF	HODs, TA
Management and Administration	Finance	Procurement of value books/stickers	Walewale					9,300	12,000				DoF	HODs, DoW/DoPP
Management and Administration	Finance	Revenue sensitization	Entire municipality						8,000				Budget unit/DoF	HODs, TA
Management and Administration	Finance	Payment of casual workers/commission collectors	Entire municipality						52,206				DoF	AM
Management and Administration	Finance	Develop and implement revenue collection plan	Walewale						-				Budget unit/DoF	F&A Sub-committee

Programme (PBB)	Sub-programme	Broad Activities	Location	Time frame (year)				Cost			Programme status		Implementing institution		
				Q1	Q2	Q3	Q4	GOG	IGF	Others	New	On-going	Lead	Collaboration	
Management and Administration	Finance	Conduct joint activities on rate / taxpayer education	Walewale						3,000.00					Budget unit/DoF	F&A/GRA
Management and Administration	Internal Audit Operations (Implementation of NACAP)	Support to facilitate quarterly Audit Committee Meetings to enhance accountability	Walewale					12,000.00	12,000.00					IAU	DoF,
Management and Administration	Internal Audit Operations (Implementation of NACAP)	Conduct quarterly audit	Walewale						2,720					IAU	HODs
Management and Administration	Internal Audit Operations (Implementation of NACAP)	Support Internal Audit field monitoring of projects	Entire municipality					5,000						IAU	AM
Management and Administration	Finance and Audit Operations (Implementation of NACAP)	Develop and implement strategic risk mgt plan	Walewale						3,000					IAU	MPCU

Programme (PBB)	Sub-programme	Broad Activities	Location	Time frame (year)				Cost			Programme status		Implementing institution	
				Q1	Q2	Q3	Q4	GOG	IGF	Others	New	On-going	Lead	Collaboration
Management and Administration	Finance and Audit Operations (Implementation of NACAP)	Conduct 2No social auditing	All zonal councils					4,000	2000				IAU	MPCU
Management and Administration	Finance and Audit Operations (Implementation of NACAP)	Participate in AAC						15,000					IAU	DoF

EMERGENCY PLANNING AND RESPONSE (INCLUDING COVID-19 RECOVERY PLAN)

Goal: Mainstream emergency planning and preparedness into the MTDP to respond to potential internal and external threats (including COVID-19)

Programme (PBB)	Sub-programme	Broad Activities	Location	Time frame (year)				Cost			Programme status		Implementing institution	
				Q1	Q2	Q3	Q4	GOG	IGF	Others	New	On-going	Lead	Collaboration
Environmental management	Disaster prevention and Management	Public education and support for tree planting	Entire municipality						2,000					
Environmental management	Disaster prevention and Management	Organize sensitization on man-made and natural disasters (floods, storms etc)	Entire municipality					2,300	2,800				NADMO	DoA, CSOs

Programme (PBB)	Sub-programme	Broad Activities	Location	Time frame (year)				Cost			Programme status		Implementing institution	
				Q1	Q2	Q3	Q4	GOG	IGF	Others	New	On-going	Lead	Collaboration
Environmental management	Disaster prevention and Management	Organize public education on prevention of epidemics eg CSM	Entire municipality					1,500	2,600				NADMO	DoH, CRS
Environmental management	Disaster prevention and Management	Organize sensitization on prevention of bush/domestic fires	Entire municipality					3,000					NADMO	GFS, FC
Environmental management	Disaster prevention and Management	Stockpile and facilitate timely response to victims	Entire municipality					180,000		178,000			NADMO	AM, CSOS
Environmental management	Disaster prevention and Management	Organize public sensitization on climate change	Entire municipality						3,500				NADMO	DoA,
Environmental management	Disaster prevention and Management	Prevention and management of COVID 19	Entire Municipality					50,000	5,000				DoH	EHU, NADMO

IMPLEMENTATION, COORDINATION, MONITORING AND EVALUATION

Goal: Improve delivery of development outcomes in the Municipality

Programme (PBB)	Sub-programme	Broad Activities	Location	Time frame (year)				Cost			Programme status		Implementing institution	
				Q1	Q2	Q3	Q4	GOG	IGF	Others	New	On-going	Lead	Collaboration
Management and administration	Monitoring and evaluation	Organize Mid-year and Annual review meetings	Walewale					15,000					Planning unit	MPCU/HODs
Management and administration	Monitoring and evaluation	Conduct joint quarterly monitoring of development projects/programmes	Entire Municipality					10,000					Planning unit	MPCU/HODs
Management and administration	Monitoring and evaluation	Conduct evaluation of selected government programmes	Entire Municipality					11,000					Planning unit	MPCU/HODs/CSOs
Management and administration	Monitoring and evaluation	Project site inspection	Project impact communities						15,000				Planning unit	DoW/Monitoring team
Management and Administration	Monitoring and evaluation	Data collection for the preparation of 2023 APR	Entire Municipality					5,000					Planning unit	HoDs
Management and Administration	Monitoring and evaluation	Organize 2No. town hall meetings on plan/budget implementation using PFM Template	Walewale					15,000	7,000				Planning/Budget units	HODs/CSOs/TA

Programme (PBB)	Sub-programme	Broad Activities	Location	Time frame (year)				Cost			Programme status		Implementing institution	
				Q1	Q2	Q3	Q4	GOG	IGF	Others	New	On-going	Lead	Collaboration
Management and Administration	Monitoring and evaluation	Organize 2No.MPCU/CSOs interface meetings	Walewale						4,000				Planning unit	CSOs/HoDs
Management and Administration	Monitoring and evaluation	Procurement of 1No. double cabin motoring pick up	Walewale							380,000			MA	Planning unit
Management and Administration	Monitoring and evaluation	Procurement of 1No. Projector	Walewale					60,000					PO	Planning unit